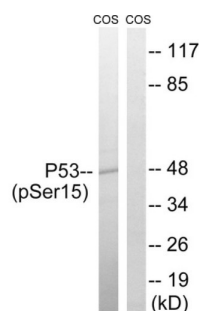
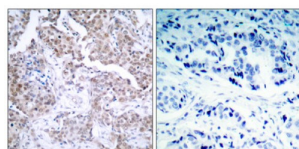


Cellular Tumor Antigen P53 Phospho-Ser15 (TP53 pS15) Antibody

Catalogue No.: abx012560



Western blot analysis of extracts from COS7 cells, using p53 (Phospho-Ser15) antibody.



Immunohistochemistry analysis of paraffin-embedded human breast carcinoma tissue, using p53 (Phospho-Ser15) antibody.

Rabbit polyclonal antibody against p53 protein. Immunogen region is N-terminal. Specificity is as follows for the reactive species: H:S15, R:S15.

Target: Cellular Tumor Antigen P53 Phospho-Ser15 (TP53 pS15)

Clonality: Polyclonal

Target Modification: Ser15

Modification: Phosphorylation

Reactivity: Human, Rat

Tested Applications: ELISA, WB, IHC, IP

Host: Rabbit

Recommended dilutions: IHC: 1/50 - 1/100, ELISA: 1/10000, WB: 1/500 - 1/3000. Optimal dilutions/concentrations should be determined by the end user.

Conjugation: Unconjugated

Immunogen: The antiserum was produced against synthesized phosphopeptide derived from human p53 around the phosphorylation site of Serine 15 (P-L-SP-Q-E).

Datasheet

Version: 2.0.0
Revision date: 14 Jul 2025



Isotype:	IgG
Form:	Liquid
Purification:	Purified from rabbit antiserum by affinity chromatography using epitope-specific immunogen.
Storage:	Aliquot and store at -20°C. Avoid repeated freeze/thaw cycles.
UniProt Primary AC:	P04637 (UniProt , ExPASy)
KEGG:	hsa:7157
String:	9606.ENSP00000269305
Sequence:	CSVEPPLSQETFSD
Buffer:	PBS (without Mg ²⁺ and Ca ²⁺), pH 7.4, 150 mM NaCl, 0.02% sodium azide, 50% glycerol.
Concentration:	1 mg/ml
Note:	THIS PRODUCT IS FOR RESEARCH USE ONLY. NOT FOR USE IN DIAGNOSTIC, THERAPEUTIC OR COSMETIC PROCEDURES. NOT FOR HUMAN OR ANIMAL CONSUMPTION.

For Reference Only