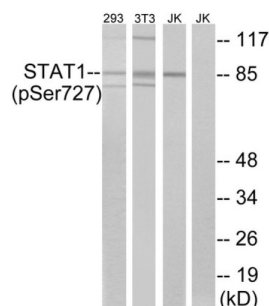
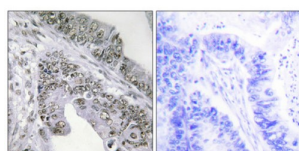


Signal Transducer And Activator of Transcription 1 Phospho-Ser727 (STAT1 pS727) Antibody

Catalogue No.: abx012566



Western blot analysis of extracts from 293 cells, 3T3 cells treated with UV (15mins) and Jurkat cells treated with eto (25uM, 24hours), using STAT1 (Phospho-Ser727) antibody.



Immunohistochemistry analysis of paraffin-embedded human colon carcinoma tissue using STAT1 (Phospho-Ser727) antibody.

Rabbit polyclonal antibody against STAT1 protein when phosphorylated at Ser727. Immunogen region is C-terminal. Specificity is as follows for the reactive species: H:S727, M:S727, R:S727.

Target: Signal Transducer And Activator of Transcription 1 Phospho-Ser727 (STAT1 pS727)

Clonality: Polyclonal

Target Modification: Ser727

Modification: Phosphorylation

Reactivity: Human, Mouse, Rat

Tested Applications: ELISA, WB, IHC

Host: Rabbit

Recommended dilutions: WB: 1/500 - 1/3000, IHC: 1/50 - 1/100, ELISA: 1/10000. Optimal dilutions/concentrations should be determined by the end user.

Conjugation: Unconjugated

Datasheet

Version: 2.0.0
Revision date: 17 Sep 2025



Immunogen:	The antiserum was produced against synthesized phosphopeptide derived from human STAT1 around the phosphorylation site of serine 727 (P-M-S ^P -P-E).
Isotype:	IgG
Form:	Liquid
Purification:	Purified from rabbit antiserum by affinity chromatography using epitope-specific phosphopeptide. The antibody against non-phosphopeptide was removed by chromatography using non-phosphopeptide corresponding to the phosphorylation site.
Storage:	Aliquot and store at -20°C. Avoid repeated freeze/thaw cycles.
UniProt Primary AC:	P42224 (UniProt , ExPASy)
Sequence:	CDNLLPMSPEEFDE
Buffer:	PBS (without Mg ²⁺ and Ca ²⁺), pH 7.4, 150 mM NaCl, 0.02% sodium azide, 50% glycerol.
Concentration:	1 mg/ml
Note:	THIS PRODUCT IS FOR RESEARCH USE ONLY. NOT FOR USE IN DIAGNOSTIC, THERAPEUTIC OR COSMETIC PROCEDURES. NOT FOR HUMAN OR ANIMAL CONSUMPTION.