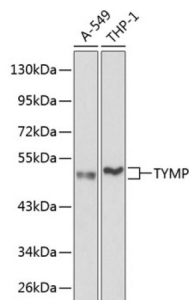


Thymidine Phosphorylase (TYMP) Antibody

Catalogue No.: abx001015



Western blot analysis of extracts of various cell lines using TYMP Antibody (1/1000 dilution).

TYMP Antibody is a Rabbit Polyclonal antibody against TYMP. This gene encodes an angiogenic factor which promotes angiogenesis in vivo and stimulates the in vitro growth of a variety of endothelial cells. It has a highly restricted target cell specificity acting only on endothelial cells. Mutations in this gene have been associated with mitochondrial neurogastrointestinal encephalomyopathy. Multiple alternatively spliced transcript variants have been identified.

Target: Thymidine Phosphorylase (TYMP)

Clonality: Polyclonal

Reactivity: Human

Tested Applications: WB

Host: Rabbit

Recommended dilutions: WB: 1/500 - 1/2000. Optimal dilutions/concentrations should be determined by the end user.

Conjugation: Unconjugated

Immunogen: Recombinant fusion protein corresponding to human TYMP

Isotype: IgG

Form: Liquid

Purification: Purified by affinity chromatography.

Storage: Aliquot and store at -20°C. Avoid repeated freeze/thaw cycles.

UniProt Primary AC: P19971 ([UniProt](#), [ExPASy](#))

Gene Symbol: TYMP

Datasheet

Version: 4.0.0

Revision date: 12 Sep 2025



GeneID: [1890](#)

NCBI Accession: NP_001944.1

KEGG: hsa:1890

String: [9606.ENSP00000379038](#)

Molecular Weight: Calculated MW: 49 kDa/50 kDa
Observed MW: 50 kDa

Buffer: PBS, pH 7.3, containing 0.01% thiomersal, 50% glycerol.

Concentration: 1 mg/ml

Note: THIS PRODUCT IS FOR RESEARCH USE ONLY. NOT FOR USE IN DIAGNOSTIC, THERAPEUTIC OR COSMETIC PROCEDURES. NOT FOR HUMAN OR ANIMAL CONSUMPTION.

For Reference Only