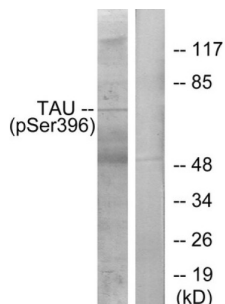


Microtubule-Associated Protein Tau Phospho-Ser396 (MAPT pS396) Antibody

Catalogue No.: abx012570



Rabbit polyclonal antibody against Tau protein. Immunogen region is C-terminal. Specificity is as follows for the reactive species: H:S713, M:S688, R:S707.

Target:	Microtubule-Associated Protein Tau Phospho-Ser396 (MAPT pS396)
Clonality:	Polyclonal
Target Modification:	Ser396
Modification:	Phosphorylation
Reactivity:	Human, Mouse, Rat
Tested Applications:	ELISA, WB
Host:	Rabbit
Recommended dilutions:	ELISA: 1/20000, WB: 1/500 - 1/3000. Optimal dilutions/concentrations should be determined by the end user.
Conjugation:	Unconjugated
Immunogen:	The antiserum was produced against synthesized phosphopeptide derived from human Tau around the phosphorylation site of serine 396 (Y-K-S ^P -P-V).
Isotype:	IgG
Form:	Liquid
Purification:	Purified from rabbit antiserum by affinity chromatography using epitope-specific phosphopeptide. The antibody against non-phosphopeptide was removed by chromatography using non-phosphopeptide corresponding to the phosphorylation site.

Datasheet

Version: 3.0.0
Revision date: 25 Jun 2025



Storage:	Aliquot and store at -20°C. Avoid repeated freeze/thaw cycles.
UniProt Primary AC:	P10636 (UniProt , ExPASy)
Gene Symbol:	MAPT
GeneID:	4137
OMIM:	157140
HGNC:	6893
KEGG:	hsa:4137
Ensembl:	ENSG00000186868
String:	9606.ENSP00000340820
Buffer:	PBS (without Mg^{2+} and Ca^{2+}), pH 7.4, 150 mM NaCl, 0.02% sodium azide, 50% glycerol.
Specificity:	Detects endogenous levels of Tau only when phosphorylated at serine 396.
Concentration:	1 mg/ml
Note:	THIS PRODUCT IS FOR RESEARCH USE ONLY. NOT FOR USE IN DIAGNOSTIC, THERAPEUTIC OR COSMETIC PROCEDURES. NOT FOR HUMAN OR ANIMAL CONSUMPTION.