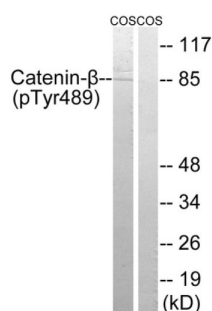
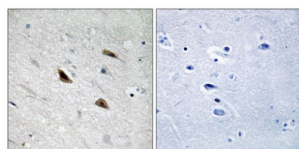


Catenin beta (Phospho-Tyr489) Antibody

Catalogue No.: abx012573



Western blot analysis of extracts from COS cells, treated with UV (15mins), using Catenin-beta (Phospho-Tyr489) antibody.



Immunohistochemistry analysis of paraffin-embedded human brain tissue using Catenin-beta (Phospho-Tyr489) antibody.

Rabbit polyclonal antibody against Catenin beta protein. Immunogen region is Internal. Specificity is as follows for the reactive species: H:Y489, M:Y489, R:Y489.

Target: Catenin beta

Clonality: Polyclonal

Reactivity: Human, Mouse, Rat

Tested Applications: ELISA, WB, IHC

Host: Rabbit

Recommended dilutions: WB: 1/500 - 1/3000, IHC: 1/50 - 1/100, ELISA: 1/40000. Optimal dilutions/concentrations should be determined by the end user.

Conjugation: Unconjugated

Immunogen: The antiserum was produced against synthesized phosphopeptide derived from human Catenin beta around the phosphorylation site of tyrosine 489 (L-H-YP-G-L).

Isotype: IgG

Form: Liquid

Datasheet

Version: 2.0.0

Revision date: 26 Jun 2025



Purification: Purified from rabbit antiserum by affinity chromatography using epitope-specific immunogen.

Storage: Aliquot and store at -20°C. Avoid repeated freeze/thaw cycles.

UniProt Primary AC: P35222 ([UniProt](#), [ExPASy](#))

Sequence: CQNAVRLHYGLPVVVK

Buffer: PBS (without Mg^{2+} and Ca^{2+}), pH 7.4, 150 mM NaCl, 0.02% sodium azide, 50% glycerol.

Concentration: 1 mg/ml

Note: THIS PRODUCT IS FOR RESEARCH USE ONLY. NOT FOR USE IN DIAGNOSTIC, THERAPEUTIC OR COSMETIC PROCEDURES. NOT FOR HUMAN OR ANIMAL CONSUMPTION.

For Reference Only