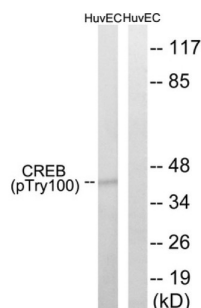


Cyclic AMP-Responsive Element-Binding Protein 1 Phospho-Thr100 (CREB1 pT100) Antibody

Catalogue No.: abx012574



Western blot analysis of extracts from HUVEC cells, treated with etoposide (25uM, 24hours), using CREB (Phospho-Thr100) antibody.

Rabbit polyclonal antibody against CREB protein. Immunogen region is Internal. Specificity is as follows for the reactive species: H:T100, M:T100, R:T100.

Target:	Cyclic AMP-Responsive Element-Binding Protein 1 Phospho-Thr100 (CREB1 pT100)
Clonality:	Polyclonal
Target Modification:	Thr100
Modification:	Phosphorylation
Reactivity:	Human, Mouse, Rat
Tested Applications:	ELISA, WB
Host:	Rabbit
Recommended dilutions:	WB: 1/500 - 1/3000, ELISA: 1/20000. Optimal dilutions/concentrations should be determined by the end user.
Conjugation:	Unconjugated
Immunogen:	The antiserum was produced against synthesized phosphopeptide derived from human CREB around the phosphorylation site of threonine 100 (S-G-TP-Q-I).
Isotype:	IgG
Form:	Liquid
Purification:	Purified from rabbit antiserum by affinity chromatography using epitope-specific immunogen.
Storage:	Aliquot and store at -20°C. Avoid repeated freeze/thaw cycles.

Datasheet

Version: 4.0.0
Revision date: 05 Jun 2025



UniProt Primary AC: P16220 ([UniProt](#), [ExPASy](#))

Gene Symbol: CREB1

GeneID: [1385](#)

OMIM: [123810](#)

NCBI Accession: NP_004370.1, NM_004379.4, NP_604391.1, NM_134442.4

KEGG: hsa:1385

String: [9606.ENSP00000387699](#)

Buffer: PBS (without Mg^{2+} and Ca^{2+}), pH 7.4, 150 mM NaCl, 0.02% sodium azide, 50% glycerol.

Concentration: 1 mg/ml

Note: THIS PRODUCT IS FOR RESEARCH USE ONLY. NOT FOR USE IN DIAGNOSTIC, THERAPEUTIC OR COSMETIC PROCEDURES. NOT FOR HUMAN OR ANIMAL CONSUMPTION.

For Reference Only