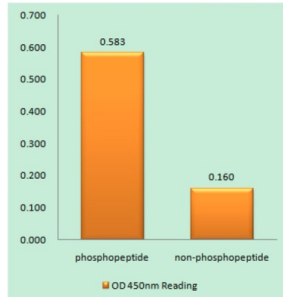
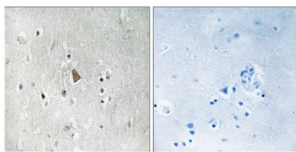


# Insulin Like Growth Factor 1 Receptor Phospho-Tyr1346 (IGF1R pY1346) Antibody

Catalogue No.: abx012580



Insulin Like Growth Factor 1 Receptor (IGF1R) (Phospho-Tyr1346) antibody reacts with epitope-specific phosphopeptide and corresponding non-phosphopeptide. The absorbance readings at 450 nm are shown in the ELISA figure.



Immunohistochemistry analysis of paraffin-embedded human brain tissue, using Insulin Like Growth Factor 1 Receptor (IGF1R) (Phospho-Tyr1346) antibody.

Rabbit polyclonal antibody against Insulin Like Growth Factor 1 Receptor (IGF1R) protein. Immunogen region is C-terminal. Specificity is as follows for the reactive species: H:Y1346, M:Y1352, R:Y1349.

**Target:** Insulin Like Growth Factor 1 Receptor Phospho-Tyr1346 (IGF1R pY1346)

**Clonality:** Polyclonal

**Target Modification:** Tyr1346

**Modification:** Phosphorylation

**Reactivity:** Human, Mouse, Rat

**Tested Applications:** ELISA, IHC

**Host:** Rabbit

**Recommended dilutions:** IHC: 1/50 - 1/100, ELISA: 1/40000. Optimal dilutions/concentrations should be determined by the end user.

**Conjugation:** Unconjugated

**Immunogen:** The antiserum was produced against synthesized phosphopeptide derived from human IGF1R around the phosphorylation site of tyrosine 1346 (Q-P-YP-A-H).

# Datasheet

Version: 2.0.0  
Revision date: 11 Oct 2025



<b>Isotype:</b>	IgG
<b>Form:</b>	Liquid
<b>Purification:</b>	Purified from rabbit antiserum by affinity chromatography using epitope-specific immunogen.
<b>Storage:</b>	Aliquot and store at -20°C. Avoid repeated freeze/thaw cycles.
<b>UniProt Primary AC:</b>	P08069 ( <a href="#">UniProt</a> , <a href="#">ExPASy</a> )
<b>KEGG:</b>	hsa:3480
<b>String:</b>	<a href="#">9606.ENSP00000268035</a>
<b>Sequence:</b>	CSFDERQPYAHMNGGR
<b>Buffer:</b>	PBS (without Mg <sup>2+</sup> and Ca <sup>2+</sup> ), pH 7.4, 150 mM NaCl, 0.02% sodium azide, 50% glycerol.
<b>Concentration:</b>	1 mg/ml
<b>Note:</b>	THIS PRODUCT IS FOR RESEARCH USE ONLY. NOT FOR USE IN DIAGNOSTIC, THERAPEUTIC OR COSMETIC PROCEDURES. NOT FOR HUMAN OR ANIMAL CONSUMPTION.

For Reference Only