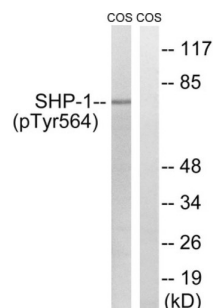


Tyrosine-Protein Phosphatase Non-Receptor Type 6 Phospho-Tyr564 (PTPN6 pY564) Antibody

Catalogue No.: abx012585



Western blot analysis of extracts from COS7 cells, treated with EGF (200ng/ml, 30mins), using SHP1 (Phospho-Tyr564) antibody.

Rabbit polyclonal antibody against SHP1 protein. Immunogen region is C-terminal. Specificity is as follows for the reactive species: H:Y564.

Target:	Tyrosine-Protein Phosphatase Non-Receptor Type 6 Phospho-Tyr564 (PTPN6 pY564)
Clonality:	Polyclonal
Target Modification:	Tyr564
Modification:	Phosphorylation
Reactivity:	Human
Tested Applications:	ELISA, WB
Host:	Rabbit
Recommended dilutions:	WB: 1/500 - 1/3000, ELISA: 1/10000. Optimal dilutions/concentrations should be determined by the end user.
Conjugation:	Unconjugated
Immunogen:	The antiserum was produced against synthesized phosphopeptide derived from human SHP-1 around the phosphorylation site of tyrosine 564 (D-V-YP-E-N).
Isotype:	IgG
Form:	Liquid
Purification:	Purified from rabbit antiserum by affinity chromatography using epitope-specific immunogen.
Storage:	Aliquot and store at -20°C. Avoid repeated freeze/thaw cycles.

Datasheet

Version: 3.0.0

Revision date: 20 Mar 2025



UniProt Primary AC: P29350 ([UniProt](#), [ExPASy](#))

KEGG: hsa:5777

String: [9606.ENSP00000391592](#)

Enzyme Commission Number: EC 3.1.3.48

Buffer: PBS (without Mg^{2+} and Ca^{2+}), pH 7.4, 150 mM NaCl, 0.02% sodium azide, 50% glycerol.

Concentration: 1 mg/ml

Note: THIS PRODUCT IS FOR RESEARCH USE ONLY. NOT FOR USE IN DIAGNOSTIC, THERAPEUTIC OR COSMETIC PROCEDURES. NOT FOR HUMAN OR ANIMAL CONSUMPTION.

For Reference Only