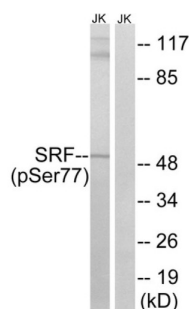
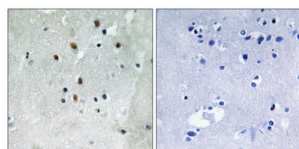


Serum Response Factor Phospho-Ser77 (SRF pS77) Antibody

Catalogue No.: abx012586



Western blot analysis of extracts from Jurkat cells, treated with PMA (125ng/ml, 30mins), using SRF (Phospho-Ser77) antibody.



Immunohistochemistry analysis of paraffin-embedded human brain tissue using SRF (Phospho-Ser77) antibody.

Rabbit polyclonal antibody against SRF protein. Immunogen region is Internal. Specificity is as follows for the reactive species: H:S77, M:S73.

Target: Serum Response Factor Phospho-Ser77 (SRF pS77)

Clonality: Polyclonal

Target Modification: Ser77

Modification: Phosphorylation

Reactivity: Human, Mouse

Tested Applications: ELISA, WB, IHC

Host: Rabbit

Recommended dilutions: WB: 1/500 - 1/3000, IHC: 1/50 - 1/100, ELISA: 1/40000. Optimal dilutions/concentrations should be determined by the end user.

Conjugation: Unconjugated

Immunogen: The antiserum was produced against synthesized phosphopeptide derived from human SRF around the phosphorylation site of serine 77 (L-Y-SP-G-S).

Datasheet

Version: 4.0.0
Revision date: 08 Aug 2025



Isotype:	IgG
Form:	Liquid
Purification:	Purified from rabbit antiserum by affinity chromatography using epitope-specific immunogen.
Storage:	Aliquot and store at -20°C. Avoid repeated freeze/thaw cycles.
UniProt Primary AC:	P11831 (UniProt , ExPASy)
KEGG:	hsa:6722
String:	9606.ENSP00000265354
Sequence:	CPTAGALYSGSEGDSE
Buffer:	PBS (without Mg^{2+} and Ca^{2+}), pH 7.4, 150 mM NaCl, 0.02% sodium azide, 50% glycerol.
Concentration:	1 mg/ml
Note:	THIS PRODUCT IS FOR RESEARCH USE ONLY. NOT FOR USE IN DIAGNOSTIC, THERAPEUTIC OR COSMETIC PROCEDURES. NOT FOR HUMAN OR ANIMAL CONSUMPTION.

For Reference Only