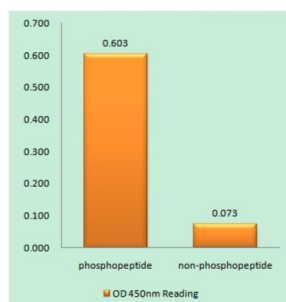
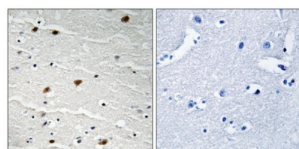


AKT1 / 2 / 3 (Phospho-Tyr315 / 316 / 312) Antibody

Catalogue No.: abx012592



AKT1/2/3 (Phospho-Tyr315/316/312) antibody reacts with epitope-specific phosphopeptide and corresponding non-phosphopeptide. The absorbance readings at 450 nM are shown in the ELISA figure.



Immunohistochemistry analysis of paraffin-embedded human brain tissue, using AKT1/2/3 (Phospho-Tyr315/316/312) antibody.

Rabbit polyclonal antibody against AKT1/2/3 protein. Immunogen region is Internal. Specificity is as follows for the reactive species: H:Y315/316/312, M:Y315/316/312, R:Y315/316/312.

Target:	AKT1/2/3
Clonality:	Polyclonal
Reactivity:	Human, Mouse, Rat
Tested Applications:	ELISA, IHC
Host:	Rabbit
Recommended dilutions:	IHC: 1/50 - 1/100, ELISA: 1/20000. Optimal dilutions/concentrations should be determined by the end user.
Conjugation:	Unconjugated
Immunogen:	The antiserum was produced against synthesized phosphopeptide derived from human AKT1/2/3 around the phosphorylation site of tyrosine 315/316/312 (P-E-YP-L-A).
Isotype:	IgG
Form:	Liquid

Datasheet

Version: 8.0.0
Revision date: 07 Sep 2025



Purification: Purified from rabbit antiserum by affinity chromatography using epitope-specific immunogen.

Storage: Aliquot and store at -20°C. Avoid repeated freeze/thaw cycles.

UniProt Primary AC: P31749 ([UniProt](#), [ExPASy](#)) P31751 ([UniProt](#), [ExPASy](#)) Q9Y243 ([UniProt](#), [ExPASy](#))

Enzyme Commission Number: EC 2.7.11.1

Sequence: TPEYLAPEVLEC

Buffer: PBS (without Mg^{2+} and Ca^{2+}), pH 7.4, 150 mM NaCl, 0.02% sodium azide, 50% glycerol.

Concentration: 1 mg/ml

Note: THIS PRODUCT IS FOR RESEARCH USE ONLY. NOT FOR USE IN DIAGNOSTIC, THERAPEUTIC OR COSMETIC PROCEDURES. NOT FOR HUMAN OR ANIMAL CONSUMPTION.

For Reference Only