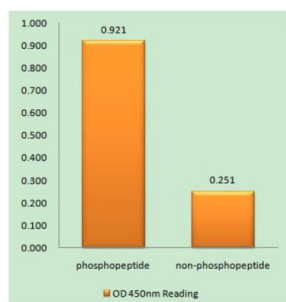
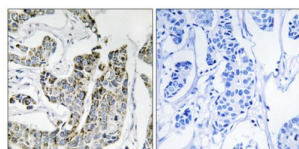


Tyrosine-Protein Kinase Blk Phospho-Tyr501 (BLK pY501) Antibody

Catalogue No.: abx012594



BLK (Phospho-Tyr501) antibody reacts with epitope-specific phosphopeptide and corresponding non-phosphopeptide. The absorbance readings at 450 nM are shown in the ELISA figure.



Immunohistochemistry analysis of paraffin-embedded human breast carcinoma tissue using BLK (Phospho-Tyr501) antibody.

Rabbit polyclonal antibody against BLK protein. Immunogen region is C-terminal. Specificity is as follows for the reactive species: H:Y501, M:Y495, R:Y495.

Target:	Tyrosine-Protein Kinase Blk Phospho-Tyr501 (BLK pY501)
Clonality:	Polyclonal
Target Modification:	Tyr501
Modification:	Phosphorylation
Reactivity:	Human, Mouse, Rat
Tested Applications:	ELISA, IHC
Host:	Rabbit
Recommended dilutions:	IHC: 1/50 - 1/100, ELISA: 1/20000. Optimal dilutions/concentrations should be determined by the end user.
Conjugation:	Unconjugated
Immunogen:	The antiserum was produced against synthesized phosphopeptide derived from human BLK around the phosphorylation site of tyrosine 501 (R-Q-YP-E-L).

Datasheet

Version: 3.0.0
Revision date: 18 Mar 2025



Isotype:	IgG
Form:	Liquid
Purification:	Purified from rabbit antiserum by affinity chromatography using epitope-specific immunogen.
Storage:	Aliquot and store at -20°C. Avoid repeated freeze/thaw cycles.
UniProt Primary AC:	P51451 (UniProt , ExPASy)
KEGG:	hsa:640
String:	9606.ENSP00000259089
Enzyme Commission Number:	EC 2.7.10.2
Sequence:	CYTATERQYELQP
Buffer:	PBS (without Mg ²⁺ and Ca ²⁺), pH 7.4, 150 mM NaCl, 0.02% sodium azide, 50% glycerol.
Concentration:	1 mg/ml
Note:	THIS PRODUCT IS FOR RESEARCH USE ONLY. NOT FOR USE IN DIAGNOSTIC, THERAPEUTIC OR COSMETIC PROCEDURES. NOT FOR HUMAN OR ANIMAL CONSUMPTION.