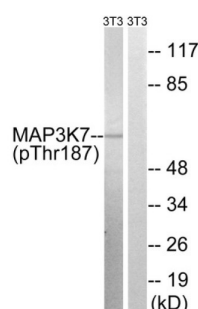


## MAP3K7 (Phospho-Thr187) Antibody

Catalogue No.: abx012607



Western blot analysis of extracts from 3T3 cells, treated with heat shock, using MAP3K7 (Phospho-Thr187) antibody.

Rabbit polyclonal antibody against MAP3K7 protein. Immunogen region is Internal. Specificity is as follows for the reactive species: H:T187, M:T187, R:T187.

<b>Target:</b>	MAP3K7
<b>Clonality:</b>	Polyclonal
<b>Reactivity:</b>	Human, Mouse, Rat
<b>Tested Applications:</b>	ELISA, WB
<b>Host:</b>	Rabbit
<b>Recommended dilutions:</b>	WB: 1/500 - 1/3000, ELISA: 1/10000. Optimal dilutions/concentrations should be determined by the end user.
<b>Conjugation:</b>	Unconjugated
<b>Immunogen:</b>	The antiserum was produced against synthesized phosphopeptide derived from human MAP3K7 around the phosphorylation site of threonine 187 (H-M-TP-N-N).
<b>Isotype:</b>	IgG
<b>Form:</b>	Liquid
<b>Purification:</b>	Purified from rabbit antiserum by affinity chromatography using epitope-specific immunogen.
<b>Storage:</b>	Aliquot and store at -20°C. Avoid repeated freeze/thaw cycles.
<b>UniProt Primary AC:</b>	O43318 ( <a href="#">UniProt</a> , <a href="#">ExPASy</a> )
<b>KEGG:</b>	hsa:6885

# Datasheet

Version: 3.0.0

Revision date: 25 Jun 2025



**String:** [9606.ENSF00000358335](#)

**Enzyme Commission Number:** EC 2.7.11.25

**Buffer:** PBS (without  $Mg^{2+}$  and  $Ca^{2+}$ ), pH 7.4, 150 mM NaCl, 0.02% sodium azide, 50% glycerol.

**Concentration:** 1 mg/ml

**Note:** THIS PRODUCT IS FOR RESEARCH USE ONLY. NOT FOR USE IN DIAGNOSTIC, THERAPEUTIC OR COSMETIC PROCEDURES. NOT FOR HUMAN OR ANIMAL CONSUMPTION.

For Reference Only