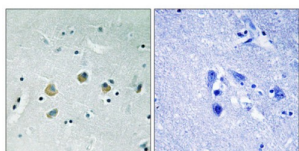


## MAP3K8 (Phospho-Ser400) Antibody

Catalogue No.: abx012608



Immunohistochemistry analysis of paraffin-embedded human brain tissue using MAP3K8 (Phospho-Ser400) antibody.

Rabbit polyclonal antibody against MAP3K8 protein. Immunogen region is C-terminal. Specificity is as follows for the reactive species: H:S400, M:S400, R:S400.

<b>Target:</b>	MAP3K8
<b>Clonality:</b>	Polyclonal
<b>Reactivity:</b>	Human, Mouse, Rat
<b>Tested Applications:</b>	ELISA, IHC
<b>Host:</b>	Rabbit
<b>Recommended dilutions:</b>	IHC: 1/50 - 1/100, ELISA: 1/1000. Optimal dilutions/concentrations should be determined by the end user.
<b>Conjugation:</b>	Unconjugated
<b>Immunogen:</b>	The antiserum was produced against synthesized phosphopeptide derived from human MAP3K8 around the phosphorylation site of serine 400 (C-Q-SP-L-D).
<b>Isotype:</b>	IgG
<b>Form:</b>	Liquid
<b>Purification:</b>	Purified from rabbit antiserum by affinity chromatography using epitope-specific immunogen.
<b>Storage:</b>	Aliquot and store at -20°C. Avoid repeated freeze/thaw cycles.
<b>UniProt Primary AC:</b>	P41279 ( <a href="#">UniProt</a> , <a href="#">ExPASy</a> )
<b>Enzyme Commission Number:</b>	EC 2.7.11.25

# Datasheet

Version: 4.0.0

Revision date: 11 Sep 2025



**Sequence:** DQPRCQSLDSAL

**Buffer:** PBS (without  $Mg^{2+}$  and  $Ca^{2+}$ ), pH 7.4, 150 mM NaCl, 0.02% sodium azide, 50% glycerol.

**Concentration:** 1 mg/ml

**Note:** THIS PRODUCT IS FOR RESEARCH USE ONLY. NOT FOR USE IN DIAGNOSTIC, THERAPEUTIC OR COSMETIC PROCEDURES. NOT FOR HUMAN OR ANIMAL CONSUMPTION.

For Reference Only