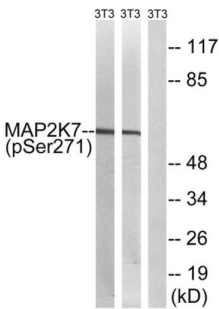
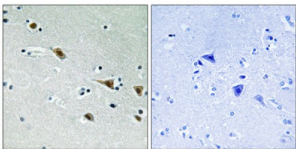


MAP2K7 (Phospho-Ser271) Antibody

Catalogue No.: abx012611



Western blot analysis of extracts from 3T3 cells treated with insulin (0.01U/ml, 15mins) and 3T3 cells treated with EGF (200ng/ml, 30mins), using MAP2K7 (Phospho-Ser271) antibody.



Immunohistochemistry analysis of paraffin-embedded human brain tissue, using MAP2K7 (Phospho-Ser271) antibody.

Rabbit polyclonal antibody against MAP2K7 protein. Immunogen region is Internal. Specificity is as follows for the reactive species: H:S271, M:S287, R:S271.

Target:	MAP2K7
Clonality:	Polyclonal
Reactivity:	Human, Mouse, Rat
Tested Applications:	ELISA, WB, IHC
Host:	Rabbit
Recommended dilutions:	ELISA: 1/20000, WB: 1/500 - 1/3000, IHC: 1/50 - 1/100. Optimal dilutions/concentrations should be determined by the end user.
Conjugation:	Unconjugated
Immunogen:	The antiserum was produced against synthesized phosphopeptide derived from human MAP2K7 around the phosphorylation site of serine 271 (V-D-SP-K-A).
Isotype:	IgG
Form:	Liquid

Datasheet

Version: 3.0.0
Revision date: 23 Sep 2025



Purification:	Purified from rabbit antiserum by affinity chromatography using epitope-specific immunogen.
Storage:	Aliquot and store at -20°C. Avoid repeated freeze/thaw cycles.
UniProt Primary AC:	O14733 (UniProt , ExPASy)
KEGG:	hsa:5609
String:	9606.ENSP00000381070
Enzyme Commission Number:	EC 2.7.12.2
Sequence:	CISGRLVDSKAKTR
Buffer:	PBS (without Mg ²⁺ and Ca ²⁺), pH 7.4, 150 mM NaCl, 0.02% sodium azide, 50% glycerol.
Concentration:	1 mg/ml
Note:	THIS PRODUCT IS FOR RESEARCH USE ONLY. NOT FOR USE IN DIAGNOSTIC, THERAPEUTIC OR COSMETIC PROCEDURES. NOT FOR HUMAN OR ANIMAL CONSUMPTION.

For Reference Only