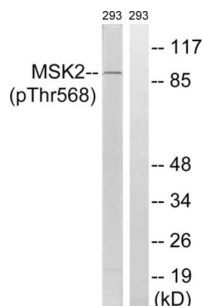


Ribosomal Protein S6 Kinase Alpha-4 Phospho-Thr568 (RPS6KA4 pT568) Antibody

Catalogue No.: abx012616



Western blot analysis of extracts from 293 cells, treated with H₂O₂ (100uM, 15mins), using MSK2 (Phospho-Thr568) antibody.

Rabbit polyclonal antibody against MSK2 protein. Immunogen region is Internal. Specificity is as follows for the reactive species: H:T568, M:T568.

Target:	Ribosomal Protein S6 Kinase Alpha-4 Phospho-Thr568 (RPS6KA4 pT568)
Clonality:	Polyclonal
Target Modification:	Thr568
Modification:	Phosphorylation
Reactivity:	Human, Mouse
Tested Applications:	ELISA, WB
Host:	Rabbit
Recommended dilutions:	ELISA: 1/5000, WB: 1/500 - 1/3000. Optimal dilutions/concentrations should be determined by the end user.
Conjugation:	Unconjugated
Immunogen:	The antiserum was produced against synthesized phosphopeptide derived from human MSK2 around the phosphorylation site of threonine 568 (M-Q-TP-P-C).
Isotype:	IgG
Form:	Liquid
Purification:	Purified from rabbit antiserum by affinity chromatography using epitope-specific immunogen.
Storage:	Aliquot and store at -20°C. Avoid repeated freeze/thaw cycles.

Datasheet

Version: 2.0.0

Revision date: 23 Jul 2025



UniProt Primary AC: O75676 ([UniProt](#), [ExPASy](#))

KEGG: hsa:8986

String: [9606.ENSP00000333896](#)

Enzyme Commission Number: EC 2.7.11.1

Buffer: PBS (without Mg^{2+} and Ca^{2+}), pH 7.4, 150 mM NaCl, 0.02% sodium azide, 50% glycerol.

Concentration: 1 mg/ml

Note: THIS PRODUCT IS FOR RESEARCH USE ONLY. NOT FOR USE IN DIAGNOSTIC, THERAPEUTIC OR COSMETIC PROCEDURES. NOT FOR HUMAN OR ANIMAL CONSUMPTION.

For Reference Only