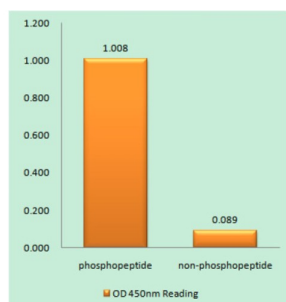
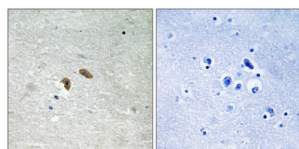


C-RAF (Phospho-Thr269) Antibody

Catalogue No.: abx012624



C-RAF (Phospho-Thr269) antibody reacts with epitope-specific phosphopeptide and corresponding non-phosphopeptide. The absorbance readings at 450 nM are shown in the ELISA figure.



Immunohistochemistry analysis of paraffin-embedded human brain tissue using C-RAF (Phospho-Thr269) antibody.

Rabbit polyclonal antibody against C-RAF protein. Immunogen region is Internal. Specificity is as follows for the reactive species: H:T269, M:T269, R:T269.

Target:	C-RAF
Clonality:	Polyclonal
Reactivity:	Human, Mouse, Rat
Tested Applications:	ELISA, IHC
Host:	Rabbit
Recommended dilutions:	IHC: 1/50 - 1/100, ELISA: 1/40000. Optimal dilutions/concentrations should be determined by the end user.
Conjugation:	Unconjugated
Immunogen:	The antiserum was produced against synthesized phosphopeptide derived from human C-RAF around the phosphorylation site of threonine 269 (S-T-TP-L-P).
Isotype:	IgG
Form:	Liquid

Datasheet

Version: 5.0.0
Revision date: 13 Aug 2025



Purification:	Purified from rabbit antiserum by affinity chromatography using epitope-specific immunogen.
Storage:	Aliquot and store at -20°C. Avoid repeated freeze/thaw cycles.
UniProt Primary AC:	P04049 (UniProt , ExPASy)
KEGG:	hsa:5894
String:	9606.ENSP00000251849
Enzyme Commission Number:	EC 2.7.11.1
Sequence:	CVHMOVSTTLPVDSR
Buffer:	PBS (without Mg ²⁺ and Ca ²⁺), pH 7.4, 150 mM NaCl, 0.02% sodium azide, 50% glycerol.
Concentration:	1 mg/ml
Note:	THIS PRODUCT IS FOR RESEARCH USE ONLY. NOT FOR USE IN DIAGNOSTIC, THERAPEUTIC OR COSMETIC PROCEDURES. NOT FOR HUMAN OR ANIMAL CONSUMPTION.

For Reference Only