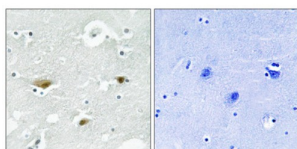


## STK39 (Phospho-Ser325) Antibody

Catalogue No.: abx012628



Immunohistochemistry analysis of paraffin-embedded human brain tissue using STK39 (Phospho-Ser325) antibody.

Rabbit polyclonal antibody against STK39 protein. Immunogen region is Internal. Specificity is as follows for the reactive species: H:S325, M:S335, R:S332.

<b>Target:</b>	STK39
<b>Clonality:</b>	Polyclonal
<b>Reactivity:</b>	Human, Mouse, Rat
<b>Tested Applications:</b>	ELISA, IHC
<b>Host:</b>	Rabbit
<b>Recommended dilutions:</b>	IHC: 1/50 - 1/100, ELISA: 1/1000. Optimal dilutions/concentrations should be determined by the end user.
<b>Conjugation:</b>	Unconjugated
<b>Immunogen:</b>	The antiserum was produced against synthesized phosphopeptide derived from human STK39 around the phosphorylation site of serine 325 (D-P-SP-K-R).
<b>Isotype:</b>	IgG
<b>Form:</b>	Liquid
<b>Purification:</b>	Purified from rabbit antiserum by affinity chromatography using epitope-specific immunogen.
<b>Storage:</b>	Aliquot and store at -20°C. Avoid repeated freeze/thaw cycles.
<b>UniProt Primary AC:</b>	Q9UEW8 ( <a href="#">UniProt</a> , <a href="#">ExPASy</a> )
<b>String:</b>	<a href="#">9606.ENSP00000348278</a>

# Datasheet

Version: 3.0.0

Revision date: 28 Aug 2025



**Enzyme Commission Number:** EC 2.7.11.1

**Sequence:** CLQKDPSKRPTAAE

**Buffer:** PBS (without  $Mg^{2+}$  and  $Ca^{2+}$ ), pH 7.4, 150 mM NaCl, 0.02% sodium azide, 50% glycerol.

**Concentration:** 1 mg/ml

**Note:** THIS PRODUCT IS FOR RESEARCH USE ONLY. NOT FOR USE IN DIAGNOSTIC, THERAPEUTIC OR COSMETIC PROCEDURES. NOT FOR HUMAN OR ANIMAL CONSUMPTION.

For Reference Only