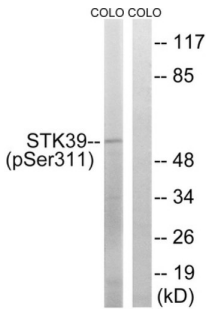
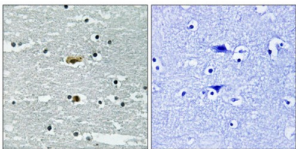


STK39 (Phospho-Ser311) Antibody

Catalogue No.: abx012629



Western blot analysis of extracts from COLO cells, using STK39 (Phospho-Ser311) antibody.



Immunohistochemistry analysis of paraffin-embedded human brain tissue using STK39 (Phospho-Ser311) antibody.

Rabbit polyclonal antibody against STK39 protein. Immunogen region is Internal. Specificity is as follows for the reactive species: H:S311, M:S321, R:S318.

Target:	STK39
Clonality:	Polyclonal
Reactivity:	Human, Mouse, Rat
Tested Applications:	WB, IHC
Host:	Rabbit
Recommended dilutions:	WB: 1/500 - 1/3000, IHC: 1/50 - 1/100. Optimal dilutions/concentrations should be determined by the end user.
Conjugation:	Unconjugated
Immunogen:	The antiserum was produced against synthesized phosphopeptide derived from human STK39 around the phosphorylation site of serine 311 (G-K-SP-F-R).
Isotype:	IgG
Form:	Liquid

Datasheet

Version: 2.0.0
Revision date: 15 Mar 2025



Purification:	Purified from rabbit antiserum by affinity chromatography using epitope-specific immunogen.
Storage:	Aliquot and store at -20°C. Avoid repeated freeze/thaw cycles.
UniProt Primary AC:	Q9UEW8 (UniProt , ExPASy)
String:	9606.ENSP00000348278
Enzyme Commission Number:	EC 2.7.11.1
Sequence:	KKYGKSFRKLLSLC
Buffer:	PBS (without Mg^{2+} and Ca^{2+}), pH 7.4, 150 mM NaCl, 0.02% sodium azide, 50% glycerol.
Concentration:	1 mg/ml
Note:	THIS PRODUCT IS FOR RESEARCH USE ONLY. NOT FOR USE IN DIAGNOSTIC, THERAPEUTIC OR COSMETIC PROCEDURES. NOT FOR HUMAN OR ANIMAL CONSUMPTION.

For Reference Only