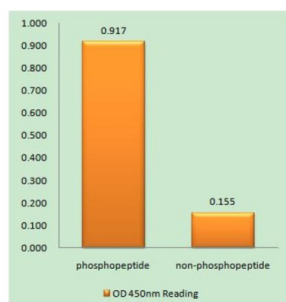
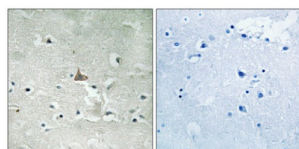


## Trk B (Phospho-Tyr706+Tyr707) Antibody

Catalogue No.: abx012632



Trk B (Phospho-Tyr706+Tyr707) antibody reacts with epitope-specific phosphopeptide and corresponding non-phosphopeptide. The absorbance readings at 450 nM are shown in the ELISA figure.



Immunohistochemistry analysis of paraffin-embedded human brain tissue using Trk B (Phospho-Tyr706+Tyr707) antibody.

Rabbit polyclonal antibody against Trk B protein. Immunogen region is C-terminal. Specificity is as follows for the reactive species: H:Y706+Y707, M:Y705+Y706, R:Y705+Y706.

<b>Target:</b>	Trk B
<b>Clonality:</b>	Polyclonal
<b>Reactivity:</b>	Human, Mouse, Rat
<b>Tested Applications:</b>	ELISA, IHC
<b>Host:</b>	Rabbit
<b>Recommended dilutions:</b>	IHC: 1/50 - 1/100, ELISA: 1/10000. Optimal dilutions/concentrations should be determined by the end user.
<b>Conjugation:</b>	Unconjugated
<b>Immunogen:</b>	The antiserum was produced against synthesized phosphopeptide derived from human Trk B around the phosphorylation site of tyrosine 706 and tyrosine 707 (T-D-YP-YP-R-V).
<b>Isotype:</b>	IgG
<b>Form:</b>	Liquid

# Datasheet

Version: 5.0.0  
Revision date: 18 Mar 2025



<b>Purification:</b>	Purified from rabbit antiserum by affinity chromatography using epitope-specific immunogen.
<b>Storage:</b>	Aliquot and store at -20°C. Avoid repeated freeze/thaw cycles.
<b>UniProt Primary AC:</b>	Q16620 ( <a href="#">UniProt</a> , <a href="#">ExPASy</a> )
<b>KEGG:</b>	hsa:4915
<b>String:</b>	<a href="#">9606.ENSP00000277120</a>
<b>Enzyme Commission Number:</b>	EC 2.7.10.1
<b>Sequence:</b>	CDVYSTDYRVGHT
<b>Buffer:</b>	PBS (without Mg <sup>2+</sup> and Ca <sup>2+</sup> ), pH 7.4, 150 mM NaCl, 0.02% sodium azide, 50% glycerol.
<b>Concentration:</b>	1 mg/ml
<b>Note:</b>	THIS PRODUCT IS FOR RESEARCH USE ONLY. NOT FOR USE IN DIAGNOSTIC, THERAPEUTIC OR COSMETIC PROCEDURES. NOT FOR HUMAN OR ANIMAL CONSUMPTION.