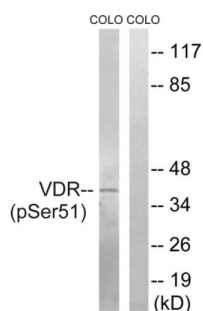


Vitamin D3 Receptor (Phospho-Ser51) Antibody

Catalogue No.: abx012636



Western blot analysis of extracts from COLO cells, treated with Insulin (0.01U/ml, 15mins), using Vitamin D3 Receptor (Phospho-Ser51) antibody.

Rabbit polyclonal antibody against Vitamin D3 Receptor protein. Immunogen region is N-terminal. Specificity is as follows for the reactive species: H:S51, M:S51, R:S51.

Target: Vitamin D3 Receptor

Clonality: Polyclonal

Reactivity: Human, Mouse, Rat

Tested Applications: ELISA, WB

Host: Rabbit

Recommended dilutions: WB: 1/500 - 1/3000, ELISA: 1/20000. Optimal dilutions/concentrations should be determined by the end user.

Conjugation: Unconjugated

Immunogen: The antiserum was produced against synthesized phosphopeptide derived from human Vitamin D3 Receptor around the phosphorylation site of serine 51 (R-R-SP-M-K).

Isotype: IgG

Form: Liquid

Purification: Purified from rabbit antiserum by affinity chromatography using epitope-specific immunogen.

Storage: Aliquot and store at -20°C. Avoid repeated freeze/thaw cycles.

UniProt Primary AC: P11473 ([UniProt](#), [ExPASy](#))

KEGG: hsa:7421

Datasheet

Version: 2.0.0

Revision date: 08 Sep 2025



String: [9606.ENSF00000447173](#)

Buffer: PBS (without Mg^{2+} and Ca^{2+}), pH 7.4, 150 mM NaCl, 0.02% sodium azide, 50% glycerol.

Concentration: 1 mg/ml

Note: THIS PRODUCT IS FOR RESEARCH USE ONLY. NOT FOR USE IN DIAGNOSTIC, THERAPEUTIC OR COSMETIC PROCEDURES. NOT FOR HUMAN OR ANIMAL CONSUMPTION.

For Reference Only