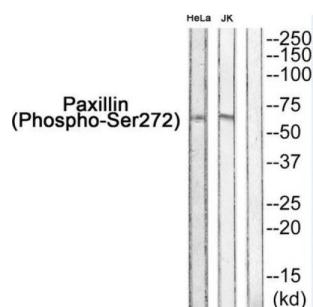


Paxillin (PXN) Antibody

Catalogue No.: abx012639



Western blot analysis of extracts from HeLa and JK, using Paxillin++.

Rabbit polyclonal antibody against Paxillin protein. Immunogen region is Internal. Specificity is as follows for the reactive species: H:S272, M:S272, R:S301.

Target:	Paxillin (PXN)
Clonality:	Polyclonal
Reactivity:	Human, Mouse, Rat
Tested Applications:	ELISA, WB
Host:	Rabbit
Recommended dilutions:	WB: 1/500 - 1/3000, ELISA: 1/10000. Optimal dilutions/concentrations should be determined by the end user.
Conjugation:	Unconjugated
Immunogen:	The antiserum was produced against synthesized phosphopeptide derived from human Paxillin around the phosphorylation site of serine 272.
Isotype:	IgG
Form:	Liquid
Purification:	Purified from rabbit antiserum by affinity chromatography using epitope-specific immunogen.
Storage:	Aliquot and store at -20°C. Avoid repeated freeze/thaw cycles.
UniProt Primary AC:	P49023 (UniProt , ExPASy)
KEGG:	hsa:5829

Datasheet

Version: 2.0.0

Revision date: 07 Sep 2025



String: [9606.ENSF00000267257](#)

Buffer: PBS (without Mg^{2+} and Ca^{2+}), pH 7.4, 150 mM NaCl, 0.02% sodium azide, 50% glycerol.

Concentration: 1 mg/ml

Note: THIS PRODUCT IS FOR RESEARCH USE ONLY. NOT FOR USE IN DIAGNOSTIC, THERAPEUTIC OR COSMETIC PROCEDURES. NOT FOR HUMAN OR ANIMAL CONSUMPTION.

For Reference Only