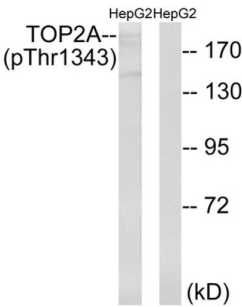


# TOP2A (Phospho-Thr1343) Antibody

Catalogue No.: abx012641



Western blot analysis of extracts from HepG2 cells, treated with Ca<sup>2+</sup> (40nM, 30mins), using TOP2A (Phospho-Thr1343) antibody.

Rabbit polyclonal antibody against TOP2A protein. Immunogen region is C-terminal. Specificity is as follows for the reactive species: H:T1343.

Target:	TOP2A
Clonality:	Polyclonal
Reactivity:	Human
Tested Applications:	ELISA, WB
Host:	Rabbit
Recommended dilutions:	WB: 1/500 - 1/3000, ELISA: 1/5000. Optimal dilutions/concentrations should be determined by the end user.
Conjugation:	Unconjugated
Immunogen:	The antiserum was produced against synthesized phosphopeptide derived from human TOP2A around the phosphorylation site of threonine 1343 (E-K-TP-D-D).
Isotype:	IgG
Form:	Liquid
Purification:	Purified from rabbit antiserum by affinity chromatography using epitope-specific immunogen.
Storage:	Aliquot and store at -20°C. Avoid repeated freeze/thaw cycles.
UniProt Primary AC:	P11388 ( <a href="#">UniProt</a> , <a href="#">ExPASy</a> )
KEGG:	hsa:7153

# Datasheet

Version: 3.0.0

Revision date: 31 Mar 2025



**String:** [9606.ENSF00000411532](#)

**Enzyme Commission Number:** EC 5.99.1.3

**Buffer:** PBS (without  $Mg^{2+}$  and  $Ca^{2+}$ ), pH 7.4, 150 mM NaCl, 0.02% sodium azide, 50% glycerol.

**Concentration:** 1 mg/ml

**Note:** THIS PRODUCT IS FOR RESEARCH USE ONLY. NOT FOR USE IN DIAGNOSTIC, THERAPEUTIC OR COSMETIC PROCEDURES. NOT FOR HUMAN OR ANIMAL CONSUMPTION.

For Reference Only