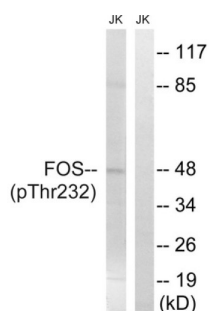
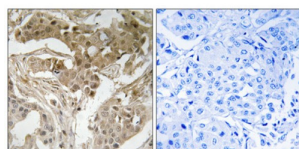


## Proto-Oncogene C-Fos Phospho-Thr232 (FOS pT232) Antibody

Catalogue No.: abx012643



Western blot analysis of extracts from Jurkat cells, treated with EGF (200 ng/ml, 5 mins), using FOS pT232 antibody.



IHC-P analysis of paraffin-embedded human breast carcinoma tissue using FOS pT232 antibody.

Rabbit polyclonal antibody against FOS pT232 protein. Immunogen region is Internal. Specificity is as follows for the reactive species: H:T232, M:T232, R:T232.

**Target:** Proto-Oncogene C-Fos Phospho-Thr232 (FOS pT232)

**Clonality:** Polyclonal

**Reactivity:** Human, Mouse, Rat

**Tested Applications:** ELISA, WB, IHC

**Host:** Rabbit

**Recommended dilutions:** ELISA: 1/20000, WB: 1/500 - 1/3000, IHC: 1/50 - 1/100. Optimal dilutions/concentrations should be determined by the end user.

**Conjugation:** Unconjugated

**Immunogen:** The antiserum was produced against synthesized phosphopeptide derived from human FOS around the phosphorylation site of threonine 232 (V-A-TP-P-E).

**Isotype:** IgG

**Form:** Liquid

# Datasheet

Version: 4.0.0  
Revision date: 19 Jul 2025



<b>Purification:</b>	Purified from rabbit antiserum by affinity chromatography using epitope-specific immunogen.
<b>Storage:</b>	Aliquot and store at -20°C. Avoid repeated freeze/thaw cycles.
<b>UniProt Primary AC:</b>	P01100 ( <a href="#">UniProt</a> , <a href="#">ExPASy</a> )
<b>KEGG:</b>	hsa:2353
<b>String:</b>	<a href="#">9606.ENSP00000306245</a>
<b>Sequence:</b>	CGLPEVATPESEEA
<b>Buffer:</b>	PBS (without $Mg^{2+}$ and $Ca^{2+}$ ), pH 7.4, 150 mM NaCl, 0.02% sodium azide, 50% glycerol.
<b>Concentration:</b>	1 mg/ml
<b>Note:</b>	THIS PRODUCT IS FOR RESEARCH USE ONLY. NOT FOR USE IN DIAGNOSTIC, THERAPEUTIC OR COSMETIC PROCEDURES. NOT FOR HUMAN OR ANIMAL CONSUMPTION.

For Reference Only