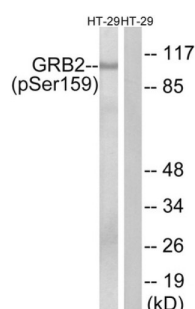


GRB2 (Phospho-Ser159) Antibody

Catalogue No.: abx012651



Western blot analysis of extracts from HT-29 cells, treated with serum (20%, 15 min), using GRB2 (Phospho-Ser159) antibody.

Rabbit polyclonal antibody against GRB2 protein. Immunogen region is Internal. Specificity is as follows for the reactive species: H:S159, M:S160, R:S160.

Target:	Growth Factor Receptor Bound Protein 2
Clonality:	Polyclonal
Reactivity:	Human, Mouse, Rat
Tested Applications:	ELISA, WB, IHC
Host:	Rabbit
Recommended dilutions:	WB: 1/500 - 1/3000, ELISA: 1/40000. Optimal dilutions/concentrations should be determined by the end user.
Conjugation:	Unconjugated
Immunogen:	The antiserum was produced against synthesized phosphopeptide derived from human GRB2 around the phosphorylation site of serine 159 (K-S-S(P)-A-P).
Isotype:	IgG
Form:	Liquid
Purification:	Purified from rabbit antiserum by affinity chromatography using epitope-specific immunogen.
Storage:	Aliquot and store at -20°C. Avoid repeated freeze/thaw cycles.
UniProt Primary AC:	Q9UQC2 (UniProt , ExPASy)
String:	9606.ENSP00000354952

Datasheet

Version: 4.0.0

Revision date: 26 Jun 2025



Sequence: CLRERKSSAPSHSS

Buffer: PBS (without Mg^{2+} and Ca^{2+}), pH 7.4, 150 mM NaCl, 0.02% sodium azide, 50% glycerol.

Specificity: Detects endogenous levels of GRB2 only when phosphorylated at serine 159.

Concentration: 1 mg/ml

Note: THIS PRODUCT IS FOR RESEARCH USE ONLY. NOT FOR USE IN DIAGNOSTIC, THERAPEUTIC OR COSMETIC PROCEDURES. NOT FOR HUMAN OR ANIMAL CONSUMPTION.

For Reference Only