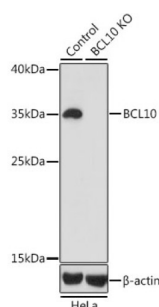
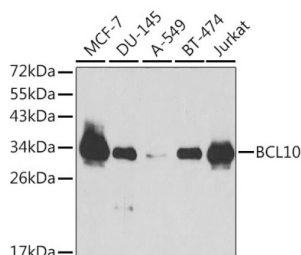


B-Cell Lymphoma/leukemia 10 (BCL10) Antibody

Catalogue No.: abx001024



Western blot analysis of extracts from normal (control) and BCL10 knockout (KO) HeLa cells using BCL10 Antibody (1/1000 dilution).



Western blot analysis of extracts of various cell lines using BCL10 Antibody (1/1000 dilution).

BCL10 Antibody is a Rabbit Polyclonal antibody against BCL10. This gene was identified by its translocation in a case of mucosa-associated lymphoid tissue (MALT) lymphoma. The protein encoded by this gene contains a caspase recruitment domain (CARD), and has been shown to induce apoptosis and to activate NF-kappaB. This protein is reported to interact with other CARD domain containing proteins including CARD9, 10, 11 and 14, which are thought to function as upstream regulators in NF-kappaB signaling. This protein is found to form a complex with MALT1, a protein encoded by another gene known to be translocated in MALT lymphoma. MALT1 and this protein are thought to synergize in the activation of NF-kappaB, and the deregulation of either of them may contribute to the same pathogenetic process that leads to the malignancy.

Target: B-Cell Lymphoma/leukemia 10 (BCL10)

Clonality: Polyclonal

Reactivity: Human

Tested Applications: WB

Host: Rabbit

Recommended dilutions: WB: 1/500 - 1/2000. Optimal dilutions/concentrations should be determined by the end user.

Conjugation: Unconjugated

Immunogen: Recombinant fusion protein corresponding to human BCL10

Isotype: IgG

Datasheet

Version: 4.0.0
Revision date: 07 Oct 2025



Form:	Liquid
Purification:	Purified by affinity chromatography.
Storage:	Aliquot and store at -20°C. Avoid repeated freeze/thaw cycles.
UniProt Primary AC:	O95999 (UniProt , ExPASy)
Gene Symbol:	BCL10
GeneID:	8915
NCBI Accession:	NP_003912.1
KEGG:	hsa:8915
String:	9606.ENSP00000359612
Molecular Weight:	Calculated MW: 26 kDa Observed MW: 33 kDa
Buffer:	PBS, pH 7.3, containing 0.02% sodium azide, 50% glycerol.
Concentration:	1 mg/ml
Note:	THIS PRODUCT IS FOR RESEARCH USE ONLY. NOT FOR USE IN DIAGNOSTIC, THERAPEUTIC OR COSMETIC PROCEDURES. NOT FOR HUMAN OR ANIMAL CONSUMPTION.