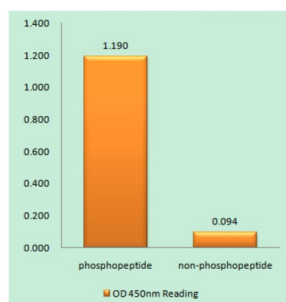
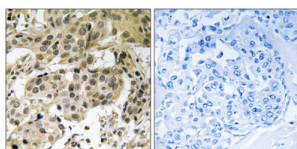


HP1 alpha (Phospho-Ser92) Antibody

Catalogue No.: abx012659



HP1 alpha (Phospho-Ser92) antibody reacts with epitope-specific phosphopeptide and corresponding non-phosphopeptide. The absorbance readings at 450 nm are shown in the ELISA figure.



Immunohistochemistry analysis of paraffin-embedded human breast carcinoma tissue using HP1 alpha (Phospho-Ser92) antibody.

Rabbit polyclonal antibody against HP1 alpha protein. Immunogen region is Internal. Specificity is as follows for the reactive species: H:S92.

Target: HP1 alpha

Clonality: Polyclonal

Reactivity: Human

Tested Applications: ELISA, IHC

Host: Rabbit

Recommended dilutions: IHC: 1/50 - 1/100, ELISA: 1/40000. Optimal dilutions/concentrations should be determined by the end user.

Conjugation: Unconjugated

Immunogen: The antiserum was produced against synthesized phosphopeptide derived from human HP1 alpha around the phosphorylation site of serine 92 (R-K-SP-N-F).

Isotype: IgG

Form: Liquid

Datasheet

Version: 2.0.0
Revision date: 25 Jun 2025



Purification:	Purified from rabbit antiserum by affinity chromatography using epitope-specific immunogen.
Storage:	Aliquot and store at -20°C. Avoid repeated freeze/thaw cycles.
UniProt Primary AC:	P45973 (UniProt , ExPASy)
KEGG:	hsa:23468
String:	9606.ENSP00000209875
Sequence:	CESNKRKSNFSNSA
Buffer:	PBS (without Mg^{2+} and Ca^{2+}), pH 7.4, 150 mM NaCl, 0.02% sodium azide, 50% glycerol.
Concentration:	1 mg/ml
Note:	THIS PRODUCT IS FOR RESEARCH USE ONLY. NOT FOR USE IN DIAGNOSTIC, THERAPEUTIC OR COSMETIC PROCEDURES. NOT FOR HUMAN OR ANIMAL CONSUMPTION.

For Reference Only