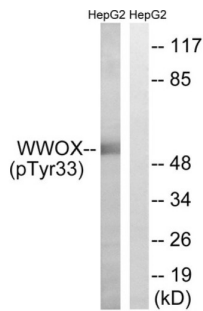
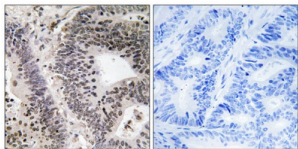


WWOX (Phospho-Tyr33) Antibody

Catalogue No.: abx012663



Western blot analysis of extracts from HepG2 cells, treated with PMA (125ng/ml, 30mins), using WWOX (Phospho-Tyr33) antibody.



Immunohistochemistry analysis of paraffin-embedded human colon carcinoma tissue using WWOX (Phospho-Tyr33) antibody.

Rabbit polyclonal antibody against WWOX protein. Immunogen region is N-terminal. Specificity is as follows for the reactive species: H:Y33, M:Y33.

| | |
|------------------------|--|
| Target: | WWOX |
| Clonality: | Polyclonal |
| Reactivity: | Human, Mouse |
| Tested Applications: | ELISA, WB, IHC |
| Host: | Rabbit |
| Recommended dilutions: | WB: 1/500 - 1/3000, IHC: 1/50 - 1/100, ELISA: 1/10000. Optimal dilutions/concentrations should be determined by the end user. |
| Conjugation: | Unconjugated |
| Immunogen: | The antiserum was produced against synthesized phosphopeptide derived from human WWOX around the phosphorylation site of tyrosine 33 (W-V-YP-Y-A). |
| Isotype: | IgG |
| Form: | Liquid |

Datasheet

Version: 3.0.0
Revision date: 22 Dec 2025



| | |
|----------------------------------|--|
| Purification: | Purified from rabbit antiserum by affinity chromatography using epitope-specific immunogen. |
| Storage: | Aliquot and store at -20°C. Avoid repeated freeze/thaw cycles. |
| UniProt Primary AC: | Q9NZC7 (UniProt , ExPASy) |
| KEGG: | hsa:51741 |
| Enzyme Commission Number: | EC 1.1.1.- |
| Sequence: | CTKDGWVYYANHTE |
| Buffer: | PBS (without Mg^{2+} and Ca^{2+}), pH 7.4, 150 mM NaCl, 0.02% sodium azide, 50% glycerol. |
| Concentration: | 1 mg/ml |
| Note: | THIS PRODUCT IS FOR RESEARCH USE ONLY. NOT FOR USE IN DIAGNOSTIC, THERAPEUTIC OR COSMETIC PROCEDURES. NOT FOR HUMAN OR ANIMAL CONSUMPTION. |

For Reference Only