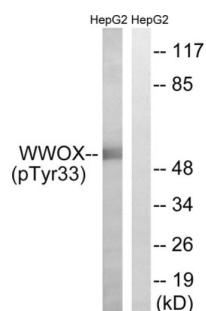
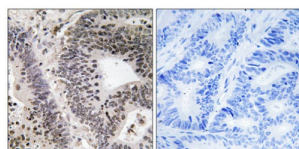


WWOX (Phospho-Tyr33) Antibody

Catalogue No.: abx012663



Western blot analysis of extracts from HepG2 cells, treated with PMA (125ng/ml, 30mins), using WWOX (Phospho-Tyr33) antibody.



Immunohistochemistry analysis of paraffin-embedded human colon carcinoma tissue using WWOX (Phospho-Tyr33) antibody.

Rabbit polyclonal antibody against WWOX protein. Immunogen region is N-terminal. Specificity is as follows for the reactive species: H:Y33, M:Y33.

Target:	WWOX
Clonality:	Polyclonal
Reactivity:	Human, Mouse
Tested Applications:	ELISA, WB, IHC
Host:	Rabbit
Recommended dilutions:	WB: 1/500 - 1/3000, IHC: 1/50 - 1/100, ELISA: 1/10000. Optimal dilutions/concentrations should be determined by the end user.
Conjugation:	Unconjugated
Immunogen:	The antiserum was produced against synthesized phosphopeptide derived from human WWOX around the phosphorylation site of tyrosine 33 (W-V-YP-Y-A).
Isotype:	IgG
Form:	Liquid

Datasheet

Version: 3.0.0
Revision date: 19 Mar 2025



Purification:	Purified from rabbit antiserum by affinity chromatography using epitope-specific immunogen.
Storage:	Aliquot and store at -20°C. Avoid repeated freeze/thaw cycles.
UniProt Primary AC:	Q9NZC7 (UniProt , ExPASy)
KEGG:	hsa:51741
Enzyme Commission Number:	EC 1.1.1.-
Sequence:	CTKDGWVYYANHTE
Buffer:	PBS (without Mg^{2+} and Ca^{2+}), pH 7.4, 150 mM NaCl, 0.02% sodium azide, 50% glycerol.
Concentration:	1 mg/ml
Note:	THIS PRODUCT IS FOR RESEARCH USE ONLY. NOT FOR USE IN DIAGNOSTIC, THERAPEUTIC OR COSMETIC PROCEDURES. NOT FOR HUMAN OR ANIMAL CONSUMPTION.

For Reference Only