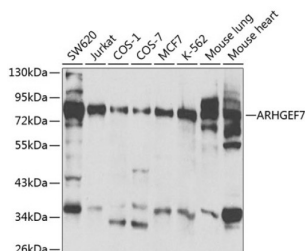


## Rho Guanine Nucleotide Exchange Factor 7 (ARHGEF7) Antibody

Catalogue No.: abx001025



Western blot analysis of various lysates using ARHGEF7 Antibody at 1/500 dilution. Secondary antibody: HRP-conjugated Goat anti-Rabbit IgG (H+L) at 1/10000 dilution. Lysates/proteins: 25 µg per lane. Blocking buffer: 3% nonfat dry milk in TBST.

ARHGEF7 Antibody is a Rabbit Polyclonal antibody against ARHGEF7. Rho GTPases play a fundamental role in numerous cellular processes triggered by extracellular stimuli that work through G protein coupled receptors. The encoded protein belongs to a family of cytoplasmic proteins that activate the Ras-like family of Rho proteins by exchanging bound GDP for GTP. It forms a complex with the small GTP binding protein Rac1 and recruits Rac1 to membrane ruffles and to focal adhesions. This protein can induce membrane ruffling. Multiple alternatively spliced transcript variants encoding different isoforms have been described for this gene.

<b>Target:</b>	Rho Guanine Nucleotide Exchange Factor 7 (ARHGEF7)
<b>Clonality:</b>	Polyclonal
<b>Reactivity:</b>	Human, Mouse
<b>Tested Applications:</b>	ELISA, WB
<b>Host:</b>	Rabbit
<b>Recommended dilutions:</b>	ELISA: 1 µg/ml, WB: 1/500 - 1/2000. Optimal dilutions/concentrations should be determined by the end user.
<b>Conjugation:</b>	Unconjugated
<b>Immunogen:</b>	Recombinant fusion protein containing a sequence corresponding to amino acids 1-260 of human ARHGEF7.
<b>Isotype:</b>	IgG
<b>Form:</b>	Liquid
<b>Purification:</b>	Purified by affinity chromatography.
<b>Storage:</b>	Aliquot and store at -20°C. Avoid repeated freeze/thaw cycles.
<b>UniProt Primary AC:</b>	Q14155 ( <a href="#">UniProt</a> , <a href="#">ExPASy</a> )

# Datasheet

Version: 5.0.0  
Revision date: 13 Mar 2025



**Gene Symbol:** ARHGEF7

**GeneID:** [8874](#)

**NCBI Accession:** NP\_001106984.1

**KEGG:** hsa:8874

**String:** [9606.ENSP00000364893](#)

**Molecular Weight:** Calculated MW: 90 kDa  
Observed MW: 86 kDa

**Buffer:** PBS, pH 7.3, containing 0.02% sodium azide, 50% glycerol.

**Concentration:** > 0.2 mg/ml

**Note:** THIS PRODUCT IS FOR RESEARCH USE ONLY. NOT FOR USE IN DIAGNOSTIC, THERAPEUTIC OR COSMETIC PROCEDURES. NOT FOR HUMAN OR ANIMAL CONSUMPTION.

For Reference Only