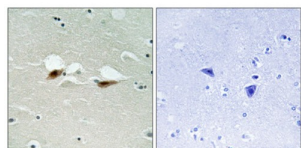


Cyclic AMP-Dependent Transcription Factor ATF-2 Phospho-Ser472 (ATF2 pS472) Antibody

Catalogue No.: abx012670



Immunohistochemistry analysis of paraffin-embedded human brain tissue using ATF2 (Phospho-Ser472) antibody.

Rabbit polyclonal antibody against ATF2 protein. Immunogen region is C-terminal. Specificity is as follows for the reactive species: H:S472, M:S472, R:S472.

Target:	Cyclic AMP-Dependent Transcription Factor ATF-2 Phospho-Ser472 (ATF2 pS472)
Clonality:	Polyclonal
Target Modification:	Ser472
Modification:	Phosphorylation
Reactivity:	Human, Mouse, Rat
Tested Applications:	ELISA, IHC
Host:	Rabbit
Recommended dilutions:	IHC: 1/50 - 1/100, ELISA: 1/5000. Optimal dilutions/concentrations should be determined by the end user.
Conjugation:	Unconjugated
Immunogen:	The antiserum was produced against synthesized phosphopeptide derived from human ATF-2 around the phosphorylation site of serine 472 (A-L-SP-Q-I).
Isotype:	IgG
Form:	Liquid
Purification:	Purified from rabbit antiserum by affinity chromatography using epitope-specific immunogen.
Storage:	Aliquot and store at -20°C. Avoid repeated freeze/thaw cycles.

Datasheet

Version: 2.0.0

Revision date: 28 Jun 2025



UniProt Primary AC: P15336 ([UniProt](#), [ExPASy](#))

Sequence: CSTEPALSQIV

Buffer: PBS (without Mg^{2+} and Ca^{2+}), pH 7.4, 150 mM NaCl, 0.02% sodium azide, 50% glycerol.

Concentration: 1 mg/ml

Note: THIS PRODUCT IS FOR RESEARCH USE ONLY. NOT FOR USE IN DIAGNOSTIC, THERAPEUTIC OR COSMETIC PROCEDURES. NOT FOR HUMAN OR ANIMAL CONSUMPTION.

For Reference Only