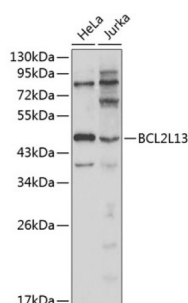


Bcl2 Like Protein 13 (BCL2L13) Antibody

Catalogue No.: abx001026



Western blot analysis of extracts of various cell lines using BCL2L13 Antibody

BCL2L13 Antibody is a Rabbit Polyclonal antibody against BCL2L13. Apoptosis is defined as a set of cascades which, when initiated, program the cell to undergo lethal changes such as membrane blebbing, mitochondrial breakdown and DNA fragmentation. The Bcl-2 family of proteins plays a central regulatory role in apoptosis. Bcl-rambo, a member of the Bcl-2 family, localizes to the mitochondria and, like other Bcl-2 family members, contains all four BH domains. Although Bcl-rambo shares structural similarity to other Bcl-2 members, it differs from them in its unique C-terminal region. Bcl-rambo has a 250 amino acid sequence containing two tandem repeats that precedes the membrane anchor region at its C-terminus. Additionally, it is the membrane anchor C-terminal region of Bcl-rambo, not its Bcl-2 homology motifs, that is responsible for its pro-apoptotic activity. Bcl-rambo induces apoptosis when overexpressed and appears to do so by promoting mitochondrial cyto-chrome c release. It may also facilitate the activation of caspase-3.

Target: Bcl2 Like Protein 13 (BCL2L13)

Clonality: Polyclonal

Reactivity: Human

Tested Applications: WB

Host: Rabbit

Recommended dilutions: WB: 1/500 - 1/2000. Optimal dilutions/concentrations should be determined by the end user.

Conjugation: Unconjugated

Immunogen: Recombinant fusion protein corresponding to human BCL2L13

Isotype: IgG

Form: Liquid

Purification: Purified by affinity chromatography.

Storage: Aliquot and store at -20°C. Avoid repeated freeze/thaw cycles.

Datasheet

Version: 4.0.0

Revision date: 23 Jun 2025



UniProt Primary AC: Q9BXK5 ([UniProt](#), [ExPASy](#))

Gene Symbol: BCL2L13

GeneID: [23786](#)

NCBI Accession: NP_056182.2

String: [9606.ENSP00000480836](#)

Molecular Weight: Calculated MW: 22 kDa/34 kDa/52 kDa
Observed MW: 48 kDa

Buffer: PBS, pH 7.3, containing 0.02% sodium azide, 50% glycerol.

Concentration: 1 mg/ml

Note: THIS PRODUCT IS FOR RESEARCH USE ONLY. NOT FOR USE IN DIAGNOSTIC, THERAPEUTIC OR COSMETIC PROCEDURES. NOT FOR HUMAN OR ANIMAL CONSUMPTION.

For Reference Only