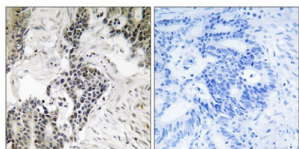


Cell Division Cycle 25C Phospho-Ser198 (CDC25C) Antibody

Catalogue No.: abx012677



Immunohistochemistry analysis of paraffin-embedded human colon carcinoma tissue, using CDC25C (Phospho-Ser198) antibody.

Rabbit polyclonal antibody against CDC25C protein. Immunogen region is Internal. Specificity is as follows for the reactive species: H:S198.

Target:	Cell Division Cycle 25C Phospho-Ser198 (CDC25C)
Clonality:	Polyclonal
Target Modification:	Ser198
Modification:	Phosphorylation
Reactivity:	Human
Tested Applications:	ELISA, IHC
Host:	Rabbit
Recommended dilutions:	IHC: 1/50 - 1/100, ELISA: 1/1000. Optimal dilutions/concentrations should be determined by the end user.
Conjugation:	Unconjugated
Immunogen:	The antiserum was produced against synthesized phosphopeptide derived from human CDC25C around the phosphorylation site of serine 198 (E-F-SP-L-K).
Isotype:	IgG
Form:	Liquid
Purification:	Purified from rabbit antiserum by affinity chromatography using epitope-specific immunogen.
Storage:	Aliquot and store at -20°C. Avoid repeated freeze/thaw cycles.

Datasheet

Version: 3.0.0

Revision date: 15 Aug 2025



UniProt Primary AC: P30307 ([UniProt](#), [ExPASy](#))

KEGG: hsa:995

String: [9606.ENSP00000321656](#)

Enzyme Commission Number: EC 3.1.3.48

Sequence: CDELMEFSLKDQ

Buffer: PBS (without Mg^{2+} and Ca^{2+}), pH 7.4, 150 mM NaCl, 0.02% sodium azide, 50% glycerol.

Concentration: 1 mg/ml

Note: THIS PRODUCT IS FOR RESEARCH USE ONLY. NOT FOR USE IN DIAGNOSTIC, THERAPEUTIC OR COSMETIC PROCEDURES. NOT FOR HUMAN OR ANIMAL CONSUMPTION.

For Reference Only