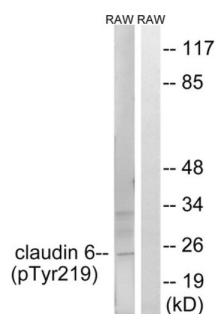


Claudin 6 (pY219) (CLDN6) Antibody

Catalogue No.: abx012680



Western blot analysis of extracts from RAW264.7 cells, treated with UV (5mins), using Claudin 6 (Phospho-Tyr219) antibody.

Rabbit polyclonal antibody against Claudin 6 protein. Immunogen region is C-terminal. Specificity is as follows for the reactive species: H:Y219, M:Y218.

Target:	Claudin 6 (pY219) (CLDN6)
Clonality:	Polyclonal
Reactivity:	Human, Mouse
Tested Applications:	ELISA, WB
Host:	Rabbit
Recommended dilutions:	WB: 1/500 - 1/3000, ELISA: 1/1000. Optimal dilutions/concentrations should be determined by the end user.
Conjugation:	Unconjugated
Immunogen:	The antiserum was produced against synthesized phosphopeptide derived from human Claudin 6 around the phosphorylation site of tyrosine 219 (T-K-N-YP-V).
Isotype:	IgG
Form:	Liquid
Purification:	Purified from rabbit antiserum by affinity chromatography using epitope-specific immunogen.
Storage:	Aliquot and store at -20°C. Avoid repeated freeze/thaw cycles.
UniProt Primary AC:	P56747 (UniProt , ExPASy)
KEGG:	hsa:9074

Datasheet

Version: 3.0.0

Revision date: 15 Jul 2025



String: [9606.ENSF00000380131](#)

Buffer: PBS (without Mg^{2+} and Ca^{2+}), pH 7.4, 150 mM NaCl, 0.02% sodium azide, 50% glycerol.

Concentration: 1 mg/ml

Note: THIS PRODUCT IS FOR RESEARCH USE ONLY. NOT FOR USE IN DIAGNOSTIC, THERAPEUTIC OR COSMETIC PROCEDURES. NOT FOR HUMAN OR ANIMAL CONSUMPTION.

For Reference Only