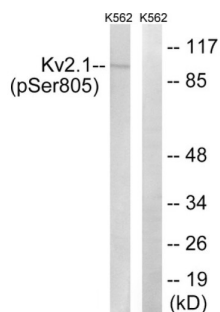
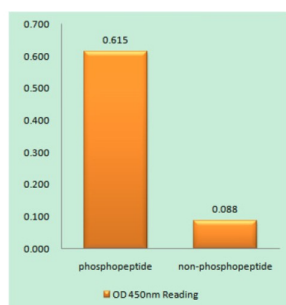


## Kv2.1 (Phospho-Ser805) Antibody

Catalogue No.: abx012695



Western blot analysis of extracts from K562 cells, treated with TNF (200ng/ml, 30mins), using Kv2.1 (Phospho-Ser805) antibody.



Kv2.1 (Phospho-Ser805) antibody reacts with epitope-specific phosphopeptide and corresponding non-phosphopeptide. The absorbance readings at 450 nM are shown in the ELISA figure.

Rabbit polyclonal antibody against Kv2.1 protein. Immunogen region is C-terminal. Specificity is as follows for the reactive species: H:S805, M:S804, R:S804.

**Target:** Kv2.1

**Clonality:** Polyclonal

**Reactivity:** Human, Mouse, Rat

**Tested Applications:** ELISA, WB

**Host:** Rabbit

**Recommended dilutions:** WB: 1/500 - 1/3000, ELISA: 1/40000. Optimal dilutions/concentrations should be determined by the end user.

**Conjugation:** Unconjugated

**Immunogen:** The antiserum was produced against synthesized phosphopeptide derived from human Kv2.1 around the phosphorylation site of serine 805 (P-T-SP-P-K).

**Isotype:** IgG

**Form:** Liquid

# Datasheet

Version: 2.0.0  
Revision date: 18 May 2025



**Purification:** Purified from rabbit antiserum by affinity chromatography using epitope-specific immunogen.

**Storage:** Aliquot and store at -20°C. Avoid repeated freeze/thaw cycles.

**UniProt Primary AC:** Q14721 ([UniProt](#), [ExPASy](#))

**KEGG:** hsa:3745

**String:** [9606.ENSP00000360806](#)

**Buffer:** PBS (without  $Mg^{2+}$  and  $Ca^{2+}$ ), pH 7.4, 150 mM NaCl, 0.02% sodium azide, 50% glycerol.

**Concentration:** 1 mg/ml

**Note:** THIS PRODUCT IS FOR RESEARCH USE ONLY. NOT FOR USE IN DIAGNOSTIC, THERAPEUTIC OR COSMETIC PROCEDURES. NOT FOR HUMAN OR ANIMAL CONSUMPTION.

For Reference Only