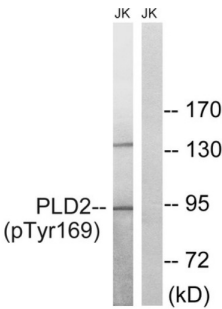
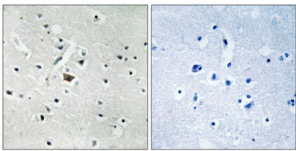


# Phospholipase D2 Phospho-Tyr169 (PLD2 pY169) Antibody

Catalogue No.: abx012708



Western blot analysis of extracts from Jurkat cells, treated with TNF (20ng/ml, 30mins), using PLD2 (Phospho-Tyr169) antibody.



Immunohistochemistry analysis of paraffin-embedded human brain tissue using PLD2 (Phospho-Tyr169) antibody.

Rabbit polyclonal antibody against PLD2 protein. Immunogen region is Internal. Specificity is as follows for the reactive species: H:Y169, M:Y169, R:Y169.

<b>Target:</b>	Phospholipase D2 Phospho-Tyr169 (PLD2 pY169)
<b>Clonality:</b>	Polyclonal
<b>Target Modification:</b>	Tyr169
<b>Modification:</b>	Phosphorylation
<b>Reactivity:</b>	Human, Mouse, Rat
<b>Tested Applications:</b>	ELISA, WB, IHC
<b>Host:</b>	Rabbit
<b>Recommended dilutions:</b>	WB: 1/500 - 1/3000, IHC: 1/50 - 1/100, ELISA: 1/10000. Optimal dilutions/concentrations should be determined by the end user.
<b>Conjugation:</b>	Unconjugated
<b>Immunogen:</b>	The antiserum was produced against synthesized phosphopeptide derived from human PLD2 around the phosphorylation site of tyrosine 169 (E-N-YP-L-N).

# Datasheet

Version: 5.0.0  
Revision date: 13 Oct 2025



Isotype:	IgG
Form:	Liquid
Purification:	Purified from rabbit antiserum by affinity chromatography using epitope-specific immunogen.
Storage:	Aliquot and store at -20°C. Avoid repeated freeze/thaw cycles.
UniProt Primary AC:	O14939 ( <a href="#">UniProt</a> , <a href="#">ExPASy</a> )
KEGG:	hsa:5338
String:	<a href="#">9606.ENSP00000263088</a>
Enzyme Commission Number:	EC 3.1.4.4
Sequence:	CQKYLENYLNRL
Buffer:	PBS (without Mg <sup>2+</sup> and Ca <sup>2+</sup> ), pH 7.4, 150 mM NaCl, 0.02% sodium azide, 50% glycerol.
Concentration:	1 mg/ml
Note:	THIS PRODUCT IS FOR RESEARCH USE ONLY. NOT FOR USE IN DIAGNOSTIC, THERAPEUTIC OR COSMETIC PROCEDURES. NOT FOR HUMAN OR ANIMAL CONSUMPTION.