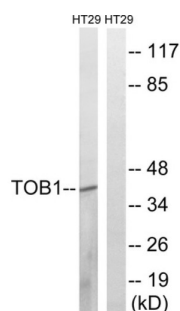
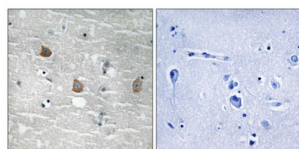


## Protein Tob1 Phospho-Ser164 (TOB1 pS164) Antibody

Catalogue No.: abx012711



Western blot analysis of extracts from HT-29 cells, treated with serum (20%, 15mins), using TOB1 (Phospho-Ser164) antibody.



Immunohistochemistry analysis of paraffin-embedded human brain tissue using TOB1 (Phospho-Ser164) antibody.

Rabbit polyclonal antibody against TOB1 protein. Immunogen region is Internal. Specificity is as follows for the reactive species: H:S164, M:S164, R:S164.

**Target:** Protein Tob1 Phospho-Ser164 (TOB1 pS164)

**Clonality:** Polyclonal

**Target Modification:** Ser164

**Modification:** Phosphorylation

**Reactivity:** Human, Mouse, Rat

**Tested Applications:** ELISA, WB, IHC

**Host:** Rabbit

**Recommended dilutions:** WB: 1/500 - 1/3000, IHC: 1/50 - 1/100, ELISA: 1/5000. Optimal dilutions/concentrations should be determined by the end user.

**Conjugation:** Unconjugated

**Immunogen:** The antiserum was produced against synthesized phosphopeptide derived from human TOB1 around the phosphorylation site of serine 164 (A-V-SP-P-T).

# Datasheet

Version: 3.0.0

Revision date: 13 Aug 2025



<b>Isotype:</b>	IgG
<b>Form:</b>	Liquid
<b>Purification:</b>	Purified from rabbit antiserum by affinity chromatography using epitope-specific immunogen.
<b>Storage:</b>	Aliquot and store at -20°C. Avoid repeated freeze/thaw cycles.
<b>UniProt Primary AC:</b>	P50616 ( <a href="#">UniProt</a> , <a href="#">ExPASy</a> )
<b>KEGG:</b>	hsa:10140
<b>String:</b>	<a href="#">9606.ENSP00000427695</a>
<b>Sequence:</b>	CGHSAAVSPTFMPR
<b>Buffer:</b>	PBS (without Mg <sup>2+</sup> and Ca <sup>2+</sup> ), pH 7.4, 150 mM NaCl, 0.02% sodium azide, 50% glycerol.
<b>Concentration:</b>	1 mg/ml
<b>Note:</b>	THIS PRODUCT IS FOR RESEARCH USE ONLY. NOT FOR USE IN DIAGNOSTIC, THERAPEUTIC OR COSMETIC PROCEDURES. NOT FOR HUMAN OR ANIMAL CONSUMPTION.

For Reference Only