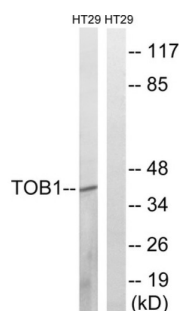
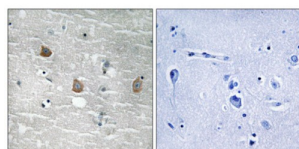


Protein Tob1 Phospho-Ser164 (TOB1 pS164) Antibody

Catalogue No.: abx012711



Western blot analysis of extracts from HT-29 cells, treated with serum (20%, 15mins), using TOB1 (Phospho-Ser164) antibody.



Immunohistochemistry analysis of paraffin-embedded human brain tissue using TOB1 (Phospho-Ser164) antibody.

Rabbit polyclonal antibody against TOB1 protein. Immunogen region is Internal. Specificity is as follows for the reactive species: H:S164, M:S164, R:S164.

Target: Protein Tob1 Phospho-Ser164 (TOB1 pS164)

Clonality: Polyclonal

Target Modification: Ser164

Modification: Phosphorylation

Reactivity: Human, Mouse, Rat

Tested Applications: ELISA, WB, IHC

Host: Rabbit

Recommended dilutions: WB: 1/500 - 1/3000, IHC: 1/50 - 1/100, ELISA: 1/5000. Optimal dilutions/concentrations should be determined by the end user.

Conjugation: Unconjugated

Immunogen: The antiserum was produced against synthesized phosphopeptide derived from human TOB1 around the phosphorylation site of serine 164 (A-V-SP-P-T).

Datasheet

Version: 3.0.0
Revision date: 29 Jun 2025



Isotype:	IgG
Form:	Liquid
Purification:	Purified from rabbit antiserum by affinity chromatography using epitope-specific immunogen.
Storage:	Aliquot and store at -20°C. Avoid repeated freeze/thaw cycles.
UniProt Primary AC:	P50616 (UniProt , ExPASy)
KEGG:	hsa:10140
String:	9606.ENSP00000427695
Sequence:	CGHSAAVSPTFMPR
Buffer:	PBS (without Mg ²⁺ and Ca ²⁺), pH 7.4, 150 mM NaCl, 0.02% sodium azide, 50% glycerol.
Concentration:	1 mg/ml
Note:	THIS PRODUCT IS FOR RESEARCH USE ONLY. NOT FOR USE IN DIAGNOSTIC, THERAPEUTIC OR COSMETIC PROCEDURES. NOT FOR HUMAN OR ANIMAL CONSUMPTION.

For Reference Only