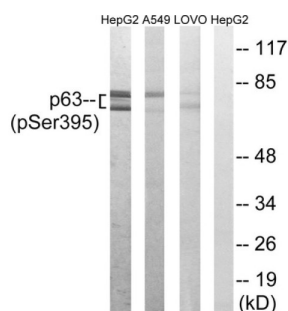


Tumor Protein P63 Phospho-Ser395 (TP63 pS395) Antibody

Catalogue No.: abx012715



Rabbit polyclonal antibody against p63 protein. Immunogen region is Internal. Specificity is as follows for the reactive species: H:S395, M:S395, R:S395.

Target:	Tumor Protein P63 Phospho-Ser395 (TP63 pS395)
Clonality:	Polyclonal
Target Modification:	Ser395
Modification:	Phosphorylation
Reactivity:	Human, Mouse, Rat
Tested Applications:	ELISA, WB
Host:	Rabbit
Recommended dilutions:	WB: 1/500 - 1/3000, ELISA: 1/40000. Optimal dilutions/concentrations should be determined by the end user.
Conjugation:	Unconjugated
Immunogen:	The antiserum was produced against synthesized phosphopeptide derived from human p63 around the phosphorylation site of serine 395 (R-R-SP-P-D).
Isotype:	IgG
Form:	Liquid
Purification:	Purified from rabbit antiserum by affinity chromatography using epitope-specific immunogen.
Storage:	Aliquot and store at -20°C. Avoid repeated freeze/thaw cycles.

Datasheet

Version: 3.0.0

Revision date: 01 Sep 2025



UniProt Primary AC: Q9H3D4 ([UniProt](#), [ExPASy](#))

Buffer: PBS (without Mg^{2+} and Ca^{2+}), pH 7.4, 150 mM NaCl, 0.02% sodium azide, 50% glycerol.

Concentration: 1 mg/ml

Note: THIS PRODUCT IS FOR RESEARCH USE ONLY. NOT FOR USE IN DIAGNOSTIC, THERAPEUTIC OR COSMETIC PROCEDURES. NOT FOR HUMAN OR ANIMAL CONSUMPTION.

For Reference Only