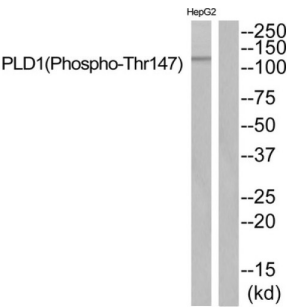


Phospholipase D1 Phospho-Thr147 (PLD1 pT147) Antibody

Catalogue No.: abx012716



Western blot analysis of extracts from HepG2 cells, using PLD1 (Phospho-Thr147) antibody.

Rabbit polyclonal antibody against PLD1 protein. Immunogen region is N-terminal. Specificity is as follows for the reactive species: H:T147, M:T147, R:T147.

Target:	Phospholipase D1 Phospho-Thr147 (PLD1 pT147)
Clonality:	Polyclonal
Target Modification:	Thr147
Modification:	Phosphorylation
Reactivity:	Human, Mouse, Rat
Tested Applications:	ELISA, WB
Host:	Rabbit
Recommended dilutions:	WB: 1/500 - 1/3000, ELISA: 1/40000. Optimal dilutions/concentrations should be determined by the end user.
Conjugation:	Unconjugated
Immunogen:	The antiserum was produced against synthesized phosphopeptide derived from human PLD1 around the phosphorylation site of threonine 147.
Isotype:	IgG
Form:	Liquid
Purification:	Purified from rabbit antiserum by affinity chromatography using epitope-specific immunogen.
Storage:	Aliquot and store at -20°C. Avoid repeated freeze/thaw cycles.

Datasheet

Version: 2.0.0

Revision date: 28 Jul 2025



UniProt Primary AC: Q13393 ([UniProt](#), [ExPASy](#))

KEGG: hsa:5337

String: [9606.ENSP00000342793](#)

Enzyme Commission Number: EC 3.1.4.4

Buffer: PBS (without Mg^{2+} and Ca^{2+}), pH 7.4, 150 mM NaCl, 0.02% sodium azide, 50% glycerol.

Concentration: 1 mg/ml

Note: THIS PRODUCT IS FOR RESEARCH USE ONLY. NOT FOR USE IN DIAGNOSTIC, THERAPEUTIC OR COSMETIC PROCEDURES. NOT FOR HUMAN OR ANIMAL CONSUMPTION.

For Reference Only