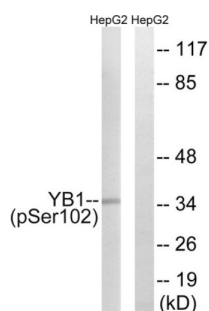


## Y-Box Binding Protein 1 Phospho-Ser102 (YBX1 pS102) Antibody

Catalogue No.: abx012717



Western blot analysis of extracts from HepG2 cells, treated with PMA (125 ng/ml, 15 min), using YBX1 pS102 antibody. The lane on the right is blocked with the phosphopeptide.

Rabbit polyclonal antibody against YB1 protein. Immunogen region is Internal. Specificity is as follows for the reactive species: H:S102, M:S100, R:S100.

<b>Target:</b>	Y-Box Binding Protein 1 Phospho-Ser102 (YBX1 pS102)
<b>Clonality:</b>	Polyclonal
<b>Target Modification:</b>	Ser102
<b>Modification:</b>	Phosphorylation
<b>Reactivity:</b>	Human, Mouse, Rat
<b>Tested Applications:</b>	ELISA, WB
<b>Host:</b>	Rabbit
<b>Recommended dilutions:</b>	ELISA: 1/40000, WB: 1/500 - 1/3000. Optimal dilutions/concentrations should be determined by the end user.
<b>Conjugation:</b>	Unconjugated
<b>Immunogen:</b>	The antiserum was produced against synthesized phosphopeptide derived from human YBX1 around the phosphorylation site of serine 102 (L-R-S <sup>P</sup> -V-G).
<b>Isotype:</b>	IgG
<b>Form:</b>	Liquid
<b>Purification:</b>	Purified from rabbit antiserum by affinity chromatography using epitope-specific phosphopeptide. The antibody against non-phosphopeptide was removed by chromatography using non-phosphopeptide corresponding to the phosphorylation site.
<b>Storage:</b>	Aliquot and store at -20°C. Avoid repeated freeze/thaw cycles.

# Datasheet

Version: 4.0.0

Revision date: 27 Aug 2025



**UniProt Primary AC:** P67809 ([UniProt](#), [ExPASy](#))

**KEGG:** hsa:4904

**String:** [9606.ENSP00000361626](#)

**Buffer:** PBS (without  $Mg^{2+}$  and  $Ca^{2+}$ ), pH 7.4, 150 mM NaCl, 0.02% sodium azide, 50% glycerol.

**Specificity:** Detects endogenous levels of YBX1 only when phosphorylated at serine 102.

**Concentration:** 1 mg/ml

**Note:** THIS PRODUCT IS FOR RESEARCH USE ONLY. NOT FOR USE IN DIAGNOSTIC, THERAPEUTIC OR COSMETIC PROCEDURES. NOT FOR HUMAN OR ANIMAL CONSUMPTION.

For Reference Only