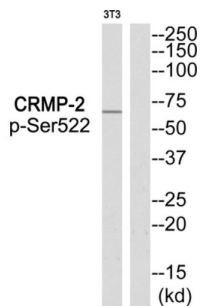


CRMP2 (Phospho-Ser522) Antibody

Catalogue No.: abx012743



Rabbit polyclonal antibody against CRMP2 protein. Immunogen region is C-terminal. Specificity is as follows for the reactive species: H:S522, M:S522, R:S522.

Target:	CRMP2
Clonality:	Polyclonal
Reactivity:	Human, Mouse, Rat
Tested Applications:	WB
Host:	Rabbit
Recommended dilutions:	Optimal dilutions/concentrations should be determined by the end user.
Conjugation:	Unconjugated
Immunogen:	The antiserum was produced against synthesized phosphopeptide derived from human CRMP2 around the phosphorylation site of serine 522.
Isotype:	IgG
Form:	Liquid
Purification:	Purified from rabbit antiserum by affinity chromatography using epitope-specific immunogen.
Storage:	Aliquot and store at -20°C. Avoid repeated freeze/thaw cycles.
UniProt Primary AC:	Q16555 (UniProt , ExPASy)
KEGG:	hsa:1808

Datasheet

Version: 3.0.0

Revision date: 06 Jun 2025



String: [9606.ENSF00000309539](#)

Buffer: PBS (without Mg^{2+} and Ca^{2+}), pH 7.4, 150 mM NaCl, 0.02% sodium azide, 50% glycerol.

Concentration: 1 mg/ml

Note: THIS PRODUCT IS FOR RESEARCH USE ONLY. NOT FOR USE IN DIAGNOSTIC, THERAPEUTIC OR COSMETIC PROCEDURES. NOT FOR HUMAN OR ANIMAL CONSUMPTION.

For Reference Only