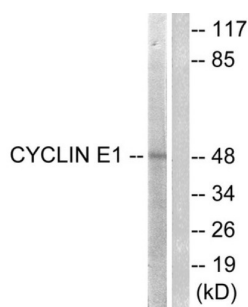
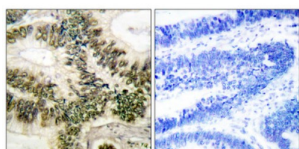


Cyclin E1 (CCNE1) Antibody

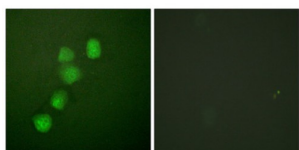
Catalogue No.: abx012757



Western blot analysis of extracts from HeLa cells, treated with Paclitaxel (1 μ M, 60mins), using Cyclin E1 antibody. The lane on the right is blocked with the synthesised peptide.



Immunohistochemical analysis of paraffin-embedded human colon carcinoma tissue, using Cyclin E1 antibody. The picture on the right is blocked with the synthesised peptide.



Immunofluorescence analysis of HuvEc cells, using Cyclin E1 antibody. The picture on the right is blocked with the synthesised peptide.

Rabbit polyclonal antibody against Cyclin E1 protein. Immunogen region is C-terminal.

Target: Cyclin E1 (CCNE1)

Clonality: Polyclonal

Reactivity: Human, Mouse

Tested Applications: ELISA, WB, IHC, IF/ICC

Host: Rabbit

Recommended dilutions: ELISA: 1/10000, WB: 1/500 - 1/3000, IHC: 1/50 - 1/100, IF/ICC: 1/500 - 1/3000. Optimal dilutions/concentrations should be determined by the end user.

Conjugation: Unconjugated

Datasheet

Version: 3.0.0
Revision date: 27 Jun 2025



Immunogen:	The antiserum was produced against synthesized non-phosphopeptide derived from human Cyclin E1 around the phosphorylation site of threonine 395 (L-L-T-P-P).
Isotype:	IgG
Form:	Liquid
Purification:	Purified from rabbit antiserum by affinity chromatography using epitope-specific immunogen.
Storage:	Aliquot and store at -20°C. Avoid repeated freeze/thaw cycles.
UniProt Primary AC:	P24864 (UniProt , ExPASy)
Gene Symbol:	CCNE1
GeneID:	898
KEGG:	hsa:898
String:	9606.ENSP00000262643
Sequence:	CLPSGLLTPQSGK
Buffer:	PBS (without Mg ²⁺ and Ca ²⁺), pH 7.4, 150 mM NaCl, 0.02% sodium azide, 50% glycerol.
Specificity:	Detects endogenous levels of total Cyclin E1 protein.
Concentration:	1 mg/ml
Note:	THIS PRODUCT IS FOR RESEARCH USE ONLY. NOT FOR USE IN DIAGNOSTIC, THERAPEUTIC OR COSMETIC PROCEDURES. NOT FOR HUMAN OR ANIMAL CONSUMPTION.