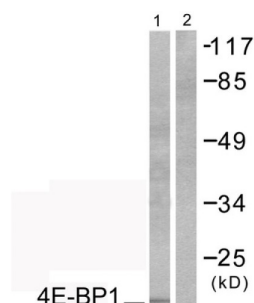
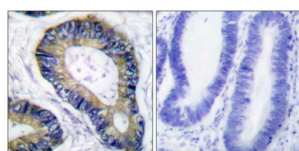


Eukaryotic Translation Initiation Factor 4E-Binding Protein 1 (4EBP1) Antibody

Catalogue No.: abx012768



Western blot analysis of extracts from COS7 cells, treated with EGF (200ng/ml, 30mins), using 4E-BP1 (epitope around residue 69) antibody (abx012768).



Immunohistochemical analysis of paraffin-embedded human colon carcinoma tissue using 4E-BP1 (epitope around residue 69) antibody (abx012768).

Rabbit polyclonal antibody against 4E-BP1 protein. Immunogen region is Internal.

Target: Eukaryotic Translation Initiation Factor 4E-Binding Protein 1 (4EBP1)

Clonality: Polyclonal

Reactivity: Mouse, Rat

Tested Applications: ELISA, WB, IHC

Host: Rabbit

Recommended dilutions: WB: 1/500 - 1/3000, IHC: 1/50 - 1/100, ELISA: 1/5000. Optimal dilutions/concentrations should be determined by the end user.

Conjugation: Unconjugated

Immunogen: The antiserum was produced against synthesized non-phosphopeptide derived from human 4E-BP1 around the phosphorylation site of threonine 70 (A-K-T-P-P).

Isotype: IgG

Form: Liquid

Datasheet

Version: 2.0.0

Revision date: 25 Jun 2025



Purification: Purified from rabbit antiserum by affinity chromatography using epitope-specific immunogen.

Storage: Aliquot and store at -20°C. Avoid repeated freeze/thaw cycles.

UniProt Primary AC: Q60876 ([UniProt](#), [ExPASy](#)) Q13541 ([UniProt](#), [ExPASy](#))

Sequence: CNSPVAKTPPKDLP

Buffer: PBS (without Mg^{2+} and Ca^{2+}), pH 7.4, 150 mM NaCl, 0.02% sodium azide, 50% glycerol.

Concentration: 1 mg/ml

Note: THIS PRODUCT IS FOR RESEARCH USE ONLY. NOT FOR USE IN DIAGNOSTIC, THERAPEUTIC OR COSMETIC PROCEDURES. NOT FOR HUMAN OR ANIMAL CONSUMPTION.

For Reference Only