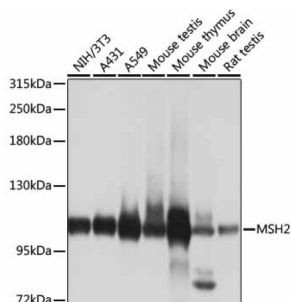


DNA Mismatch Repair Protein Msh2 (MSH2) Antibody

Catalogue No.: abx001036



Western blot analysis of extracts of various cell lines using MSH2 Antibody (1/1000 dilution).

MSH2 Antibody is a Rabbit Polyclonal antibody against MSH2. This locus is frequently mutated in hereditary nonpolyposis colon cancer (HNPCC). When cloned, it was discovered to be a human homolog of the *E. coli* mismatch repair gene *mutS*, consistent with the characteristic alterations in microsatellite sequences (RER+ phenotype) found in HNPCC. Two transcript variants encoding different isoforms have been found for this gene.

Target:	DNA Mismatch Repair Protein Msh2 (MSH2)
Clonality:	Polyclonal
Reactivity:	Human, Mouse, Rat
Tested Applications:	WB
Host:	Rabbit
Recommended dilutions:	WB: 1/500 - 1/2000. Optimal dilutions/concentrations should be determined by the end user.
Conjugation:	Unconjugated
Immunogen:	Recombinant fusion protein corresponding to human MSH2
Isotype:	IgG
Form:	Liquid
Purification:	Purified by affinity chromatography.
Storage:	Aliquot and store at -20°C. Avoid repeated freeze/thaw cycles.
UniProt Primary AC:	P43246 (UniProt , ExPASy)
Gene Symbol:	MSH2

Datasheet

Version: 4.0.0
Revision date: 16 Jun 2025



GeneID: [4436](#)

OMIM: [114500](#)

NCBI Accession: NP_000242.1, NM_000251.2

HGNC: 7325

KEGG: hsa:4436

Ensembl: ENSG00000095002

String: [9606.ENSP00000233146](#)

Molecular Weight: Calculated MW: 97 kDa/104 kDa
Observed MW: 105 kDa

Buffer: PBS, pH 7.3, containing 0.02% sodium azide, 50% glycerol.

Concentration: 1 mg/ml

Note: THIS PRODUCT IS FOR RESEARCH USE ONLY. NOT FOR USE IN DIAGNOSTIC, THERAPEUTIC OR COSMETIC PROCEDURES. NOT FOR HUMAN OR ANIMAL CONSUMPTION.