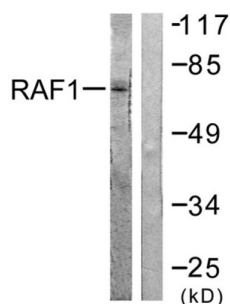
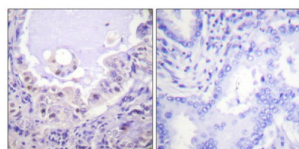


Raf Proto-Oncogene Serine/Threonine Protein Kinase (RAF1) Antibody

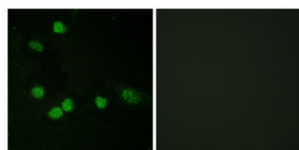
Catalogue No.: abx012788



Western blot analysis of extracts from HeLa cells, treated with UV (5mins), using Raf1 (epitope around residue 621) antibody.



Immunohistochemistry analysis of paraffin-embedded human lung carcinoma tissue using Raf1 (epitope around residue 621) antibody.



Immunofluorescence analysis of HeLa cells, using Raf1 (epitope around residue 621) antibody.

Rabbit polyclonal antibody against C-RAF protein. Immunogen region is C-terminal.

Target:	Raf Proto-Oncogene Serine/Threonine Protein Kinase (RAF1)
Clonality:	Polyclonal
Reactivity:	Human, Mouse, Rat
Tested Applications:	ELISA, WB, IHC, IF/ICC
Host:	Rabbit
Recommended dilutions:	WB: 1/500 - 1/3000, IHC: 1/50 - 1/100, IF/ICC: 1/100 - 1/500, ELISA: 1/1000. Optimal dilutions/concentrations should be determined by the end user.
Conjugation:	Unconjugated

Datasheet

Version: 3.0.0
Revision date: 28 Aug 2025



Immunogen:	The antiserum was produced against synthesized non-phosphopeptide derived from human RAF1 around the phosphorylation site of serine 621 (S-A-S-E-P).
Isotype:	IgG
Form:	Liquid
Purification:	Purified from rabbit antiserum by affinity chromatography using epitope-specific immunogen.
Storage:	Aliquot and store at -20°C. Avoid repeated freeze/thaw cycles.
UniProt Primary AC:	P04049 (UniProt , ExPASy)
KEGG:	hsa:5894
String:	9606.ENSP00000251849
Enzyme Commission Number:	EC 2.7.11.1
Sequence:	CKINRSASEPSLHR
Buffer:	PBS (without Mg ²⁺ and Ca ²⁺), pH 7.4, 150 mM NaCl, 0.02% sodium azide, 50% glycerol.
Concentration:	1 mg/ml
Note:	THIS PRODUCT IS FOR RESEARCH USE ONLY. NOT FOR USE IN DIAGNOSTIC, THERAPEUTIC OR COSMETIC PROCEDURES. NOT FOR HUMAN OR ANIMAL CONSUMPTION.