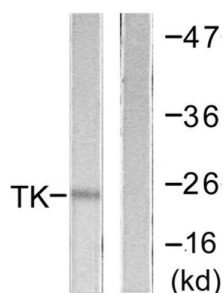
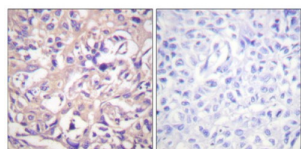


## Thymidine Kinase (TK) Antibody

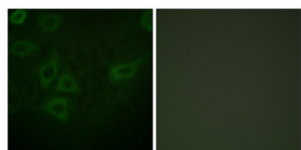
Catalogue No.: abx012791



Western blot analysis of extracts from COLO205 cells, using TK (epitope around residue 13) antibody.



Immunohistochemistry analysis of paraffin-embedded human breast carcinoma tissue using TK (epitope around residue 13) antibody.



Immunofluorescence analysis of HepG2 cells, using TK (epitope around residue 13) antibody.

Rabbit polyclonal antibody against TK protein. Immunogen region is N-terminal.

**Target:** Thymidine Kinase (TK)

**Clonality:** Polyclonal

**Reactivity:** Human, Mouse, Rat

**Tested Applications:** ELISA, WB, IHC, IF/ICC

**Host:** Rabbit

**Recommended dilutions:** WB: 1/500 - 1/3000, IHC: 1/50 - 1/100, IF/ICC: 1/100 - 1/500, ELISA: 1/1000. Optimal dilutions/concentrations should be determined by the end user.

**Conjugation:** Unconjugated

# Datasheet

Version: 3.0.0  
Revision date: 16 Sep 2025



<b>Immunogen:</b>	The antiserum was produced against synthesized non-phosphopeptide derived from human TK around the phosphorylation site of serine 13 (P-G-SP-P-S).
<b>Isotype:</b>	IgG
<b>Form:</b>	Liquid
<b>Purification:</b>	Purified from rabbit antiserum by affinity chromatography using epitope-specific immunogen.
<b>Storage:</b>	Aliquot and store at -20°C. Avoid repeated freeze/thaw cycles.
<b>UniProt Primary AC:</b>	P04183 ( <a href="#">UniProt</a> , <a href="#">ExPASy</a> )
<b>KEGG:</b>	hsa:7083
<b>String:</b>	<a href="#">9606.ENSP00000301634</a>
<b>Enzyme Commission Number:</b>	EC 2.7.1.21
<b>Sequence:</b>	CPTVLPGPSKTRG
<b>Buffer:</b>	PBS (without Mg <sup>2+</sup> and Ca <sup>2+</sup> ), pH 7.4, 150 mM NaCl, 0.02% sodium azide, 50% glycerol.
<b>Concentration:</b>	1 mg/ml
<b>Note:</b>	THIS PRODUCT IS FOR RESEARCH USE ONLY. NOT FOR USE IN DIAGNOSTIC, THERAPEUTIC OR COSMETIC PROCEDURES. NOT FOR HUMAN OR ANIMAL CONSUMPTION.