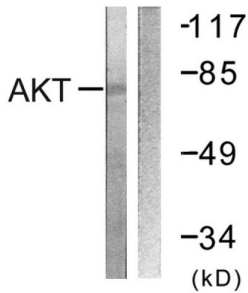
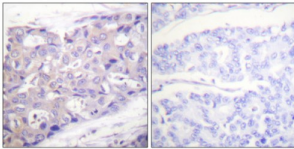


RAC-Alpha Serine/threonine-Protein Kinase (Akt) Antibody

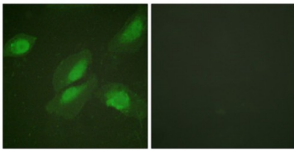
Catalogue No.: abx012803



Western blot analysis of extracts from NIH/3T3 cells, treated with Insulin (0.01U/ml, 15mins), using Akt (epitope around residue 326) antibody.



Immunohistochemistry analysis of paraffin-embedded human breast carcinoma tissue using Akt (epitope around residue 326) antibody.



Immunofluorescence analysis of HeLa cells, using Akt (epitope around residue 326) antibody.

Rabbit polyclonal antibody against Akt protein. Immunogen region is Internal.

Target:	RAC-Alpha Serine/threonine-Protein Kinase (Akt)
Clonality:	Polyclonal
Reactivity:	Human, Mouse, Rat
Tested Applications:	ELISA, WB, IHC, IF/ICC
Host:	Rabbit
Recommended dilutions:	WB: 1/500 - 1/3000, IHC: 1/50 - 1/100, IF/ICC: 1/100 - 1/500, ELISA: 1/20000. Optimal dilutions/concentrations should be determined by the end user.
Conjugation:	Unconjugated

Datasheet

Version: 2.0.0
Revision date: 20 Sep 2024



Immunogen:	The antiserum was produced against synthesized non-phosphopeptide derived from human Akt around the phosphorylation site of tyrosine 326 (N-D-YP-G-R).
Isotype:	IgG
Form:	Liquid
Purification:	Purified from rabbit antiserum by affinity chromatography using epitope-specific immunogen.
Storage:	Aliquot and store at -20°C. Avoid repeated freeze/thaw cycles.
UniProt Primary AC:	P31749 (UniProt , ExPASy)
KEGG:	hsa:207
String:	9606.ENSP00000451828
Enzyme Commission Number:	EC 2.7.11.1
Sequence:	CLEDNDYGRAV
Buffer:	PBS (without Mg ²⁺ and Ca ²⁺), pH 7.4, 150 mM NaCl, 0.02% sodium azide, 50% glycerol.
Concentration:	1 mg/ml
Note:	This product is for research use only.

For Reference Only