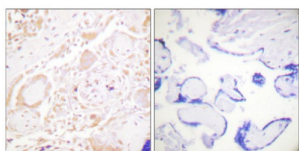
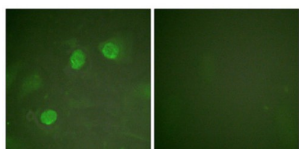


GATA Binding Protein 3 (GATA3) Antibody

Catalogue No.: abx012817



Immunohistochemistry analysis of paraffin-embedded human placenta tissue using GATA3 antibody.



Immunofluorescence analysis of HeLa cells, using GATA3 antibody.

Rabbit polyclonal antibody against GATA3 protein. Immunogen region is Internal.

Target: GATA Binding Protein 3 (GATA3)

Clonality: Polyclonal

Reactivity: Human, Mouse

Tested Applications: ELISA, IHC, IF/ICC

Host: Rabbit

Recommended dilutions: IHC: 1/50 - 1/100, IF/ICC: 1/100 - 1/500, ELISA: 1/1000. Optimal dilutions/concentrations should be determined by the end user.

Conjugation: Unconjugated

Immunogen: The antiserum was produced against synthesized non-phosphopeptide derived from human GATA3 around the phosphorylation site of residue 308.

Isotype: IgG

Form: Liquid

Purification: Purified from rabbit antiserum by affinity chromatography using epitope-specific immunogen.

Datasheet

Version: 2.0.0

Revision date: 17 Aug 2025



Storage: Aliquot and store at -20°C. Avoid repeated freeze/thaw cycles.

UniProt Primary AC: P23771 ([UniProt](#), [ExPASy](#)) P23769 ([UniProt](#), [ExPASy](#))

Sequence: CKRRLSAARR

Buffer: PBS (without Mg^{2+} and Ca^{2+}), pH 7.4, 150 mM NaCl, 0.02% sodium azide, 50% glycerol.

Concentration: 1 mg/ml

Note: THIS PRODUCT IS FOR RESEARCH USE ONLY. NOT FOR USE IN DIAGNOSTIC, THERAPEUTIC OR COSMETIC PROCEDURES. NOT FOR HUMAN OR ANIMAL CONSUMPTION.

For Reference Only