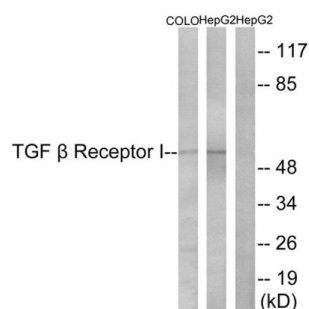
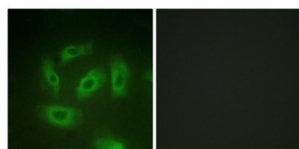


TGF Beta Receptor I (TGFB1) Antibody

Catalogue No.: abx012836



Western blot analysis of extracts from COLO cells and HepG2 cells using TGF Beta Receptor I (TGFB1) Antibody. Lane 3 is blocked with peptide.



Immunofluorescence analysis of HeLa cells, using TGF Beta Receptor I (TGFB1) Antibody. The right image is blocked with peptide.

TGF Beta Receptor I (TGFB1) Antibody is a rabbit polyclonal antibody against TGF beta Receptor I protein.

Target:	TGF Beta Receptor I (TGFB1)
Clonality:	Polyclonal
Reactivity:	Human, Mouse
Tested Applications:	ELISA, WB, IF/ICC
Host:	Rabbit
Recommended dilutions:	WB: 1/500 - 1/3000, IF/ICC: 1/100 - 1/500, ELISA: 1/10000. Optimal dilutions/concentrations should be determined by the end user.
Conjugation:	Unconjugated
Immunogen:	The antiserum was produced against synthetic nonphosphorylated peptide derived from human TGF beta Receptor I around the phosphorylation site of serine 165 (D-P-S ^P -L-D).
Isotype:	IgG
Form:	Liquid

Datasheet

Version: 5.0.0
Revision date: 06 Mar 2025



Purification: Purified from rabbit antiserum by affinity chromatography using epitope-specific immunogen.

Storage: Aliquot and store at -20°C. Avoid repeated freeze/thaw cycles.

UniProt Primary AC: P36897 ([UniProt](#), [ExPASy](#))

Enzyme Commission Number: EC 2.7.11.30

Buffer: PBS (without Mg^{2+} and Ca^{2+}), pH 7.4, 150 mM NaCl, 0.02% sodium azide, 50% glycerol.

Specificity: Detects endogenous levels of total TGF beta Receptor I protein.

Concentration: 1 mg/ml

Note: THIS PRODUCT IS FOR RESEARCH USE ONLY. NOT FOR USE IN DIAGNOSTIC, THERAPEUTIC OR COSMETIC PROCEDURES. NOT FOR HUMAN OR ANIMAL CONSUMPTION.

For Reference Only