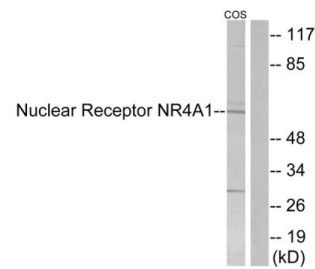
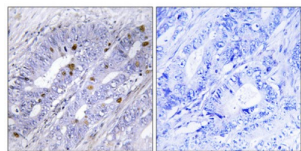


Nuclear Receptor NR4A1 Antibody

Catalogue No.: abx012842



Western blot analysis of extracts from COS-7 cells, using Nuclear Receptor NR4A1 antibody.



Immunohistochemistry analysis of paraffin-embedded human colon carcinoma tissue using Nuclear Receptor NR4A1 antibody.

Rabbit polyclonal antibody against Nuclear Receptor NR4A1 protein. Immunogen region is Internal.

Target:	Nuclear Receptor NR4A1
Clonality:	Polyclonal
Reactivity:	Human, Mouse, Rat
Tested Applications:	ELISA, WB, IHC
Host:	Rabbit
Recommended dilutions:	WB: 1/500 - 1/3000, IHC: 1/50 - 1/100, ELISA: 1/10000. Optimal dilutions/concentrations should be determined by the end user.
Conjugation:	Unconjugated
Immunogen:	The antiserum was produced against synthesized non-phosphopeptide derived from human Nuclear Receptor NR4A1 around the phosphorylation site of serine 351 (L-P-SP-K-P).
Isotype:	IgG
Form:	Liquid
Purification:	Purified from rabbit antiserum by affinity chromatography using epitope-specific immunogen.

Datasheet

Version: 3.0.0
Revision date: 25 Aug 2025



Storage:	Aliquot and store at -20°C. Avoid repeated freeze/thaw cycles.
UniProt Primary AC:	P22736 (UniProt , ExPASy)
KEGG:	hsa:3164
String:	9606.ENSP00000440864
Sequence:	CGRLPSKPKQ
Buffer:	PBS (without Mg ²⁺ and Ca ²⁺), pH 7.4, 150 mM NaCl, 0.02% sodium azide, 50% glycerol.
Specificity:	Detects endogenous levels of total Nuclear Receptor NR4A1 protein.
Concentration:	1 mg/ml
Note:	THIS PRODUCT IS FOR RESEARCH USE ONLY. NOT FOR USE IN DIAGNOSTIC, THERAPEUTIC OR COSMETIC PROCEDURES. NOT FOR HUMAN OR ANIMAL CONSUMPTION.

For Reference Only